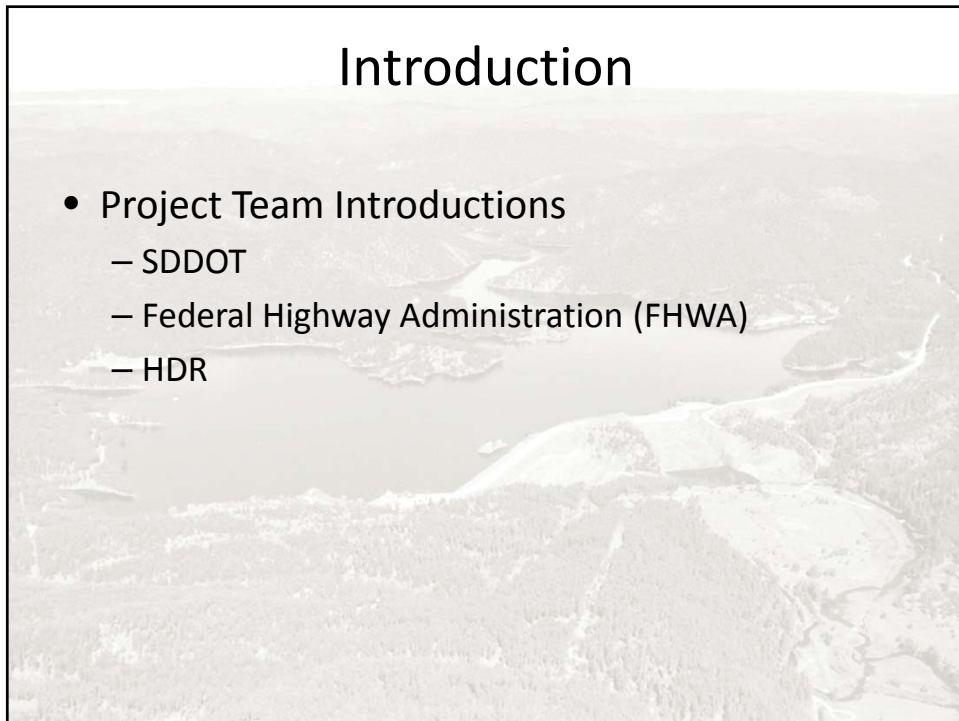




US385 Roadway Improvements
Public Input Meeting

Project PH 0685(50)96, PCN 03BD



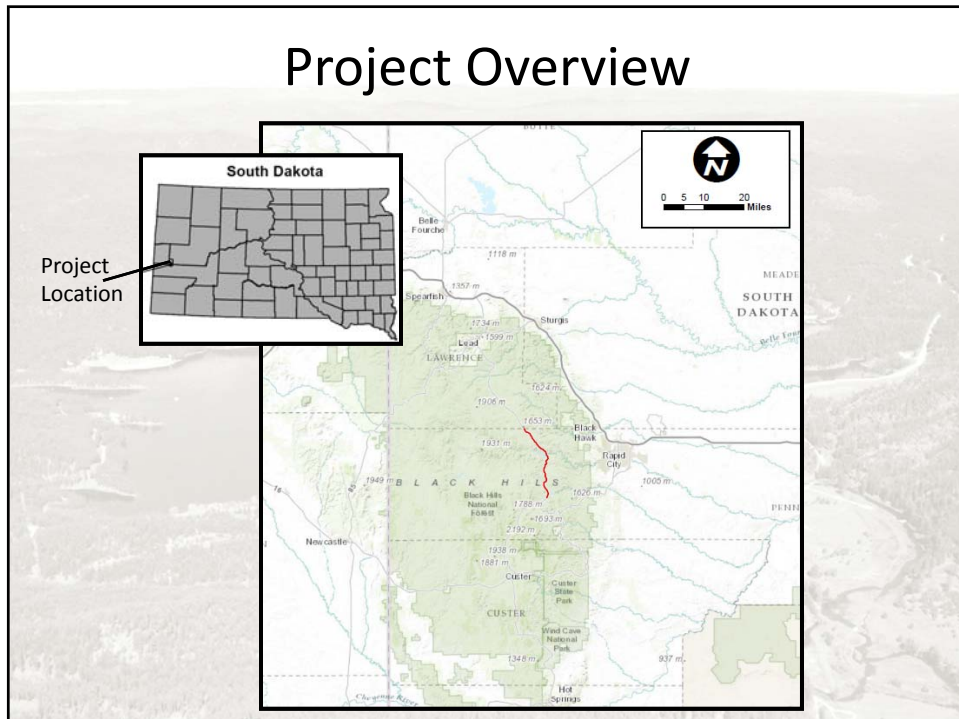
Introduction

- Project Team Introductions
 - SDDOT
 - Federal Highway Administration (FHWA)
 - HDR

Presentation Overview

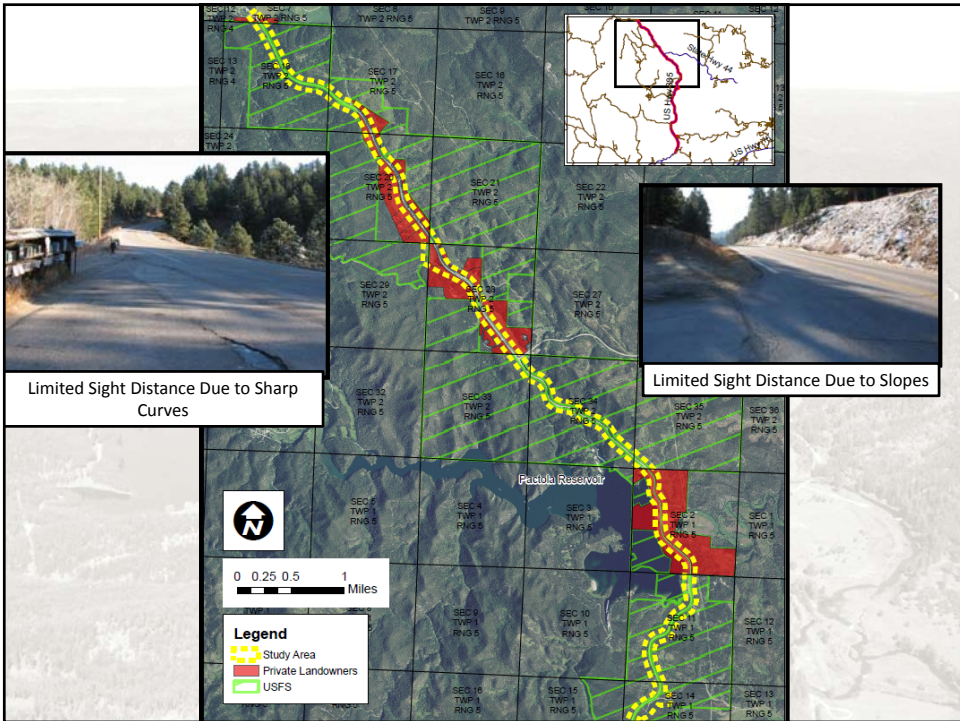
- Project Overview
- Purpose and Need for the Project
- Preliminary Alternatives Discussion
- Future Steps of the Project
- Upcoming Public Involvement
- Individual Exhibits

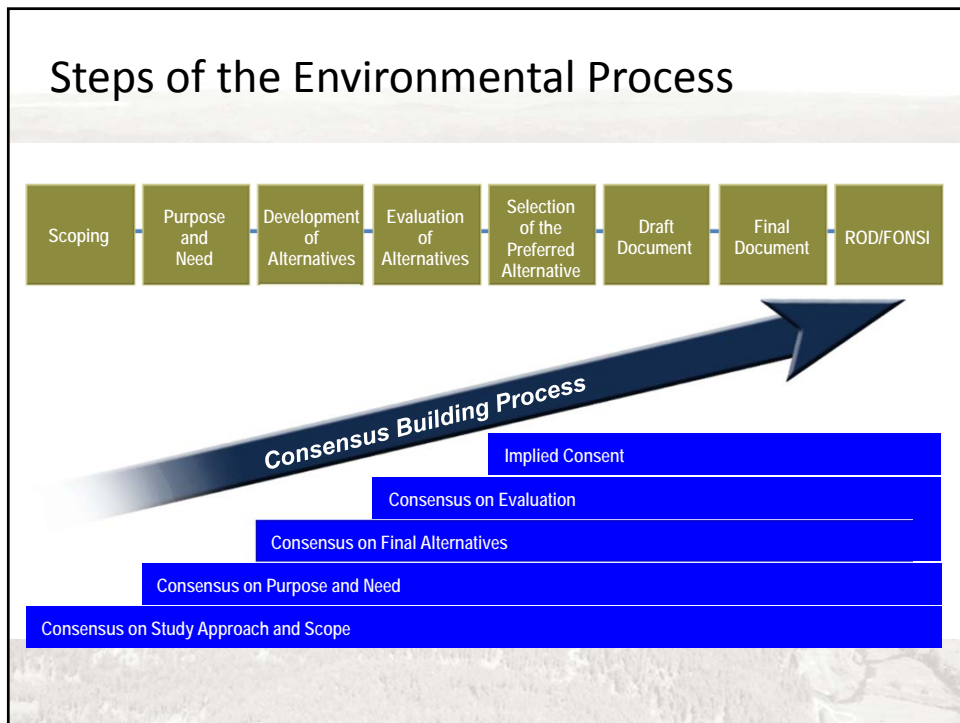
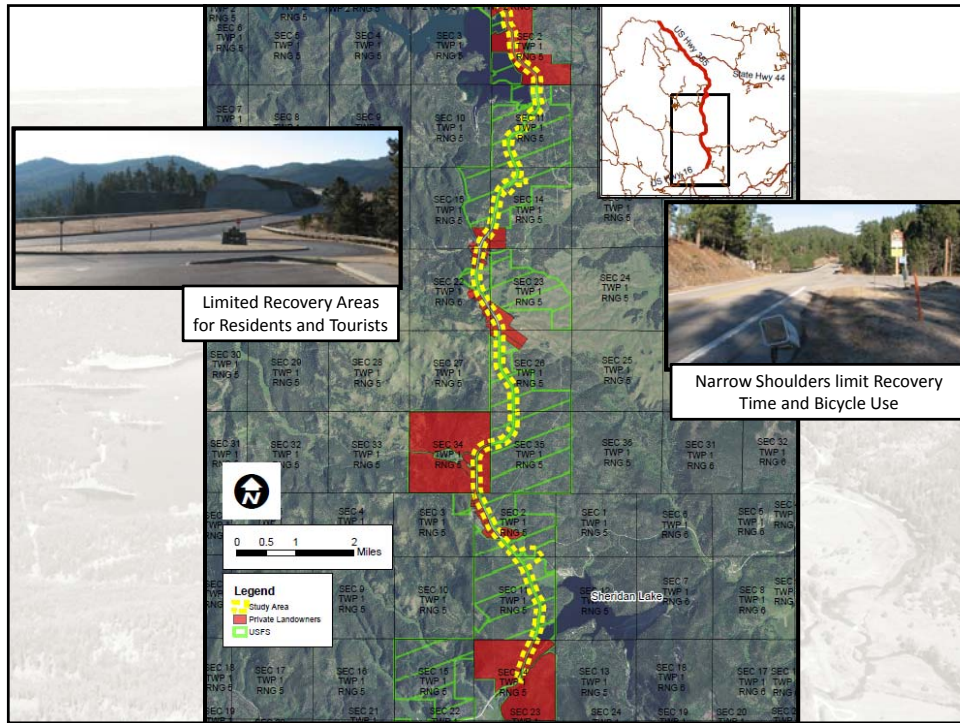
Project Overview



Project Overview

- History of off-road accidents and crashes
- SDDOT identified this segment as a potential cost to benefit ratio based on a safety module
- 63 crashes occurred on this segment of roadway in the most recent 3-year period
 - SDDOT Highway Needs Book, 2012

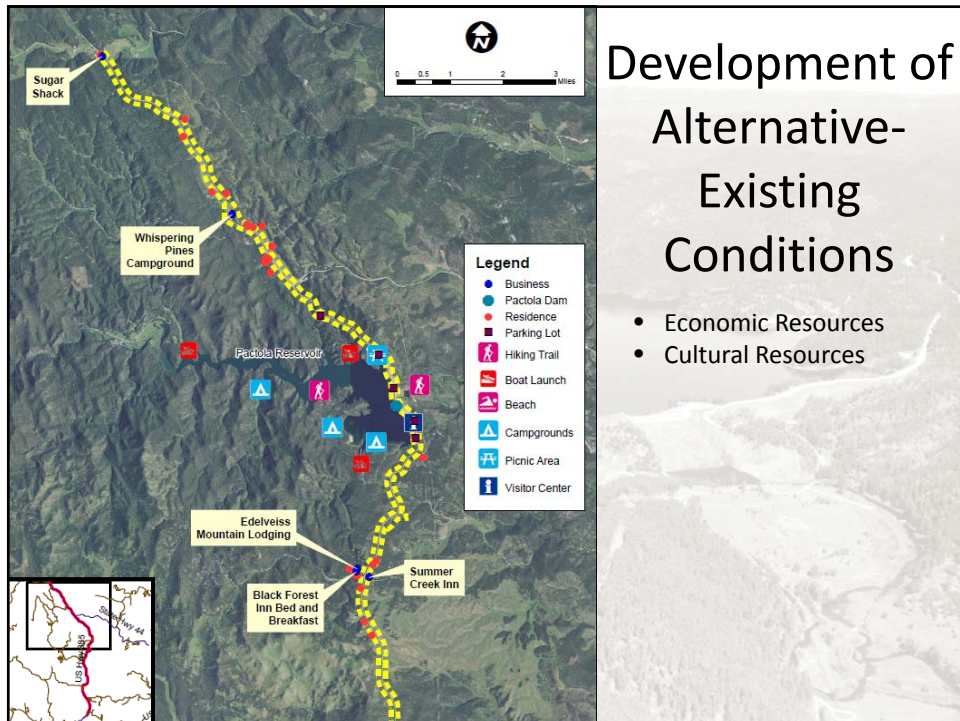


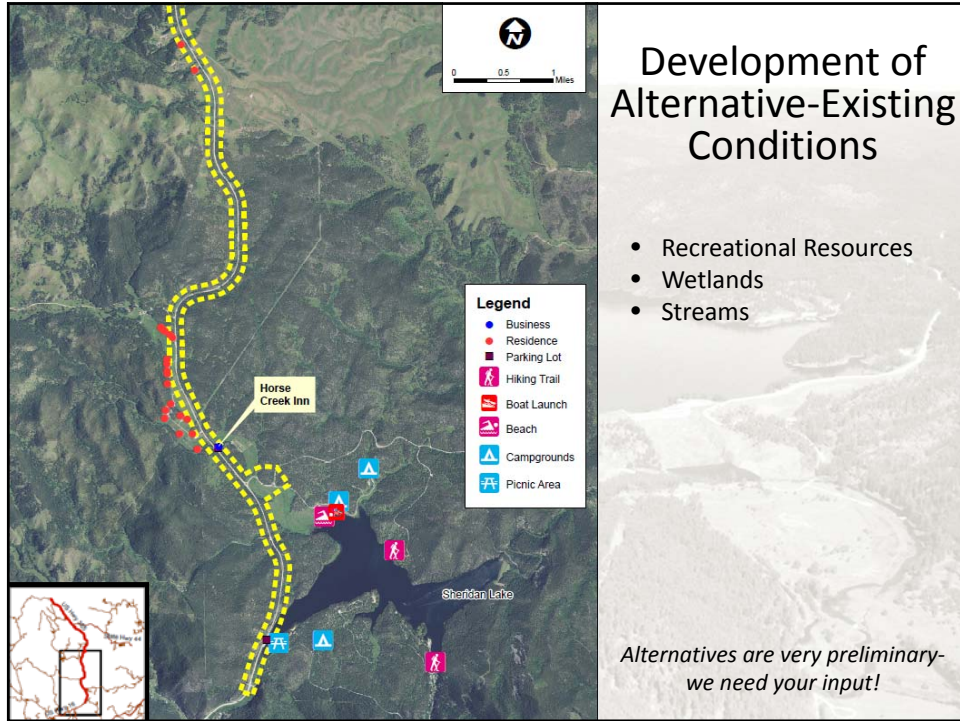


Purpose and Need for the Project

The Needs for this Project Include:

- Safety Issues of the Existing Roadway
 - Narrow Shoulders
 - Steep Shoulders
 - Limited Sight Distance due to:
 - Obstructions on side of road
 - Sharp curves
 - Natural embankments
- Deteriorating roadway surface





Alternatives Concepts

- No Build Alternative
- What do the Build Alternatives need to include:
 - Widen shoulders
 - Increase sight distance
 - Address the horizontal and vertical curvature of the roadway

Typical Sections



TYPICAL SECTION (SHOULDER WIDENING)
MRM 87.2 TO MRM 96.657

Typical Sections



TYPICAL SECTION (SHOULDER WIDENING)
MRM 96.657 TO MRM 102.37

Future Steps of the Project

- Development and Analysis of Alternatives
- Completion of the Draft EA – Summer 2013
- FHWA approves the Draft EA - Fall 2013
- Public Meeting to discuss the Preferred Alternative- Winter 2013
- Potential SDDOT US 385 Construction- 2016/2017

Upcoming Public Involvement

- Project Website- SDDOT
- Public Meeting



Comments

- Specific questions will be taken at individual exhibits
- Comment forms available for written comments

US-385 Environmental Assessment and Road Improvements Project

We WANT TO KNOW WHAT YOU THINK! What are your specific areas of concern and issues you see on the interchange project? What do you feel the SDDOT and the consulting engineer need to take into account? Please submit your comments before February 28th, 2013 to:

Mail: HDR Engineering, Inc.
ATTN: Jody Page
3820 Jackson Blvd., Suite 1
Rapid City, SD 57702

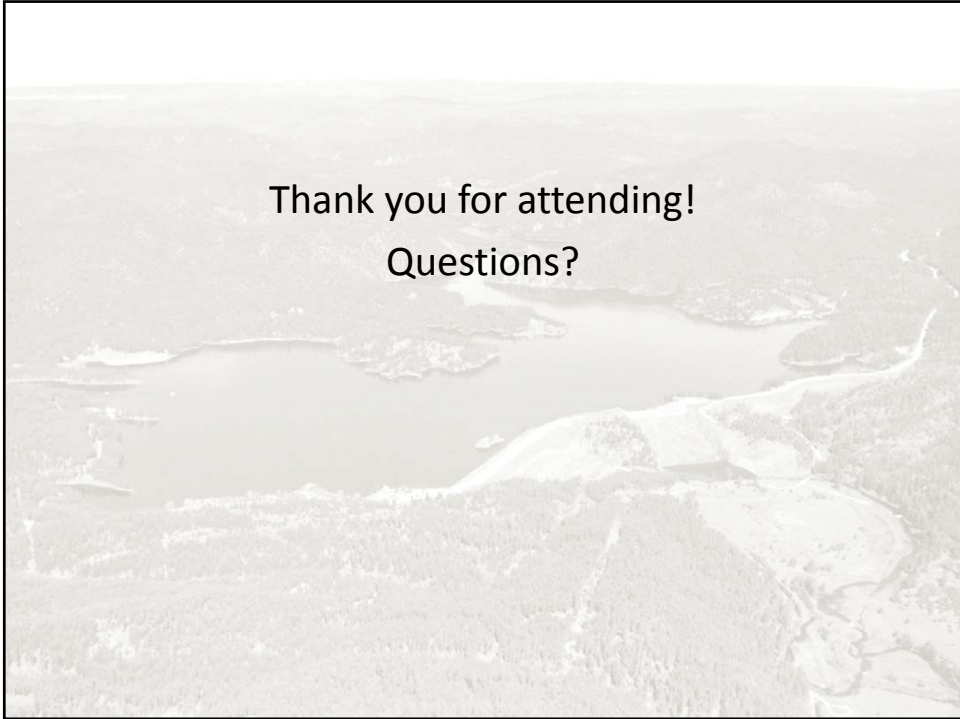
E-mail: jody.page@hdrinc.com
Fax: 605-791-6161

(optional)
Name: _____ Address: _____
Phone: _____ Email: _____

Contacts

Brace Prouty
SDDOT
700 E. Broadway Ave.
Pierre, SD 57501
605-773-6641
brace.prouty@state.sd.us

Jody Page, PE
HDR Engineering, Inc.
3820 Jackson Blvd.
Rapid City, SD 57702
605-791-6100
Jody.Page@hdrinc.com



Regional Bicycle System

