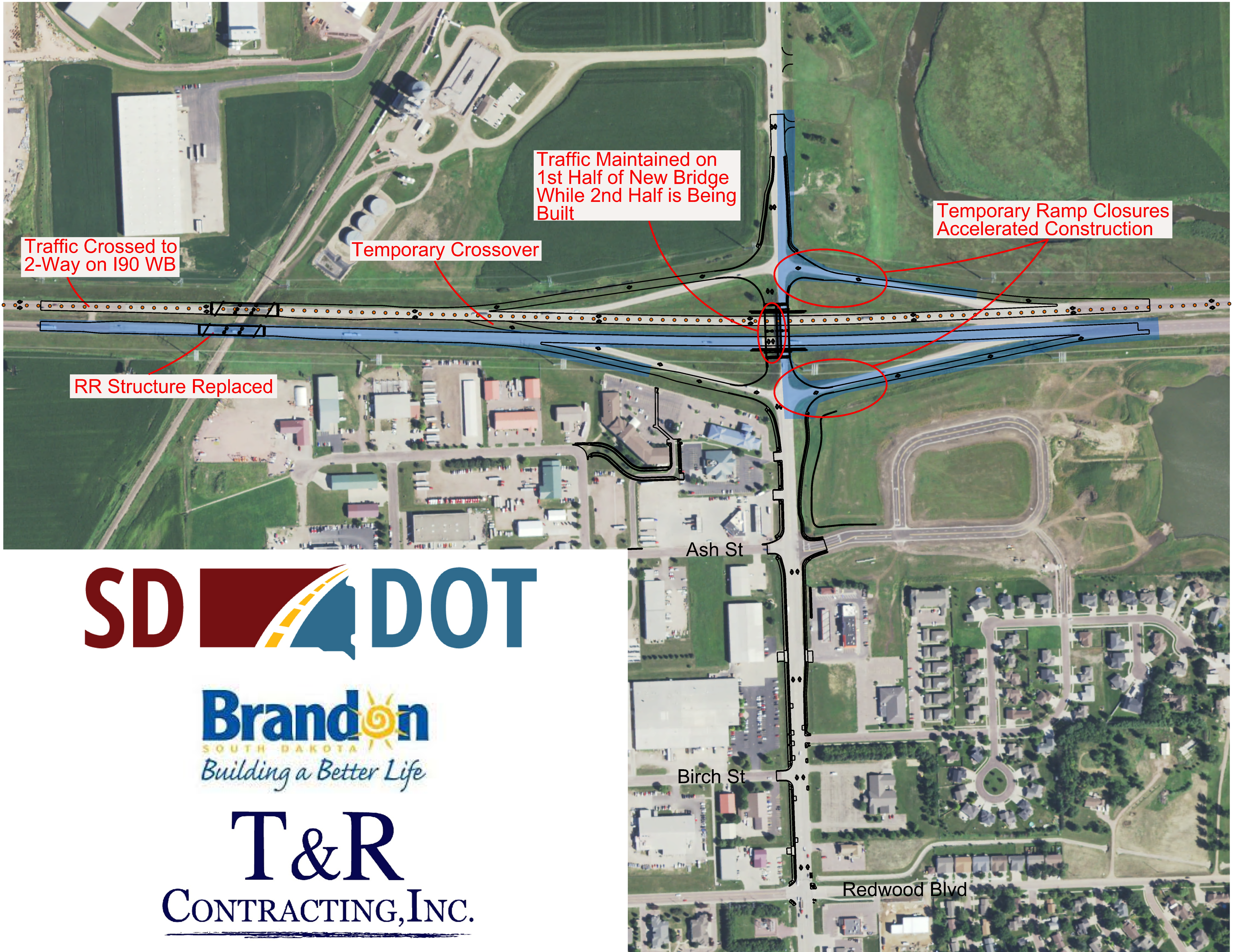


Construction Phasing

Year 2



SD DOT

Brandon
SOUTH DAKOTA
Building a Better Life

T&R
CONTRACTING, INC.

INTERSTATE 90
Exit 406 (Brandon)
Diverging Diamond Interchange

SD DOT

Includes:

- Eastbound I90 Lanes
- Eastbound RR Bridge
- Westbound Off Ramp & Eastbound On Ramp
- Remaining Portion of Eastbound Off Ramp
- East Half of SD Hwy 11 North of Interchange
- 2nd Half of New Bridge Over I90