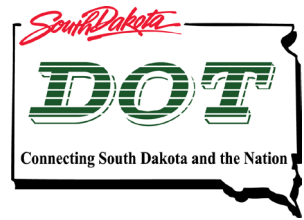




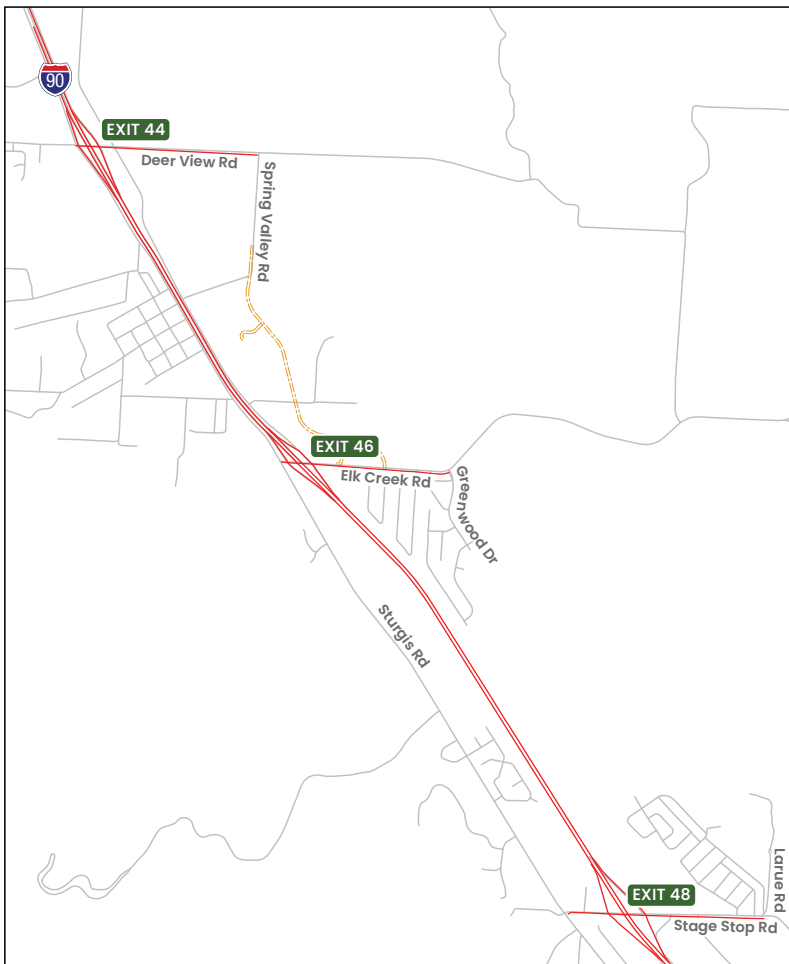
Opportunity to Provide Input



SDDOT IS COMPLETING PRELIMINARY AND FINAL DESIGN FOR I-90 EXIT 46 (ELK CREEK RD)

YOUR INPUT IS NEEDED

The existing interchange is a skewed diamond configuration that provides access from Elk Creek Road to I-90. The current design has safety and operational concerns with the proximity of the intersection of Elk Creek road and Sturgis road to the west of the interchange, and with the at-grade railroad crossing east of the interchange. Furthermore, the current bridge over I-90 does not provide pedestrian and bicycle facilities and both access ramps are controlled by stop signs. The new design will improve the facilities and prepare for future demand by facilitating future expansion of I-90.



Due to restrictions associated with COVID-19, the opportunity to provide feedback for this project will be virtual instead of in-person. The community is encouraged to visit the project website at [HTTPS://dot.sd.gov/projects-studies/projects/public-meetings](https://dot.sd.gov/projects-studies/projects/public-meetings) to view a project video that highlights the project purpose and need, project benefits and goals, and review preliminary designs.

The comment period will close at noon on **April 9, 2021**.

For questions or comments, please contact:

Jennica M. Wilcox, PE
Project Manager/Consultant
600 E 7th Street, Sioux Falls, SD 57103
jennica.wilcox@fhueng.com
www.fhueng.com
605.777.1973

