

Public Meeting

S.D. Highway 37

Reconstruction & Structures

NH 0037(157)76 PCN 05UY

Neil Schochenmaier, PE

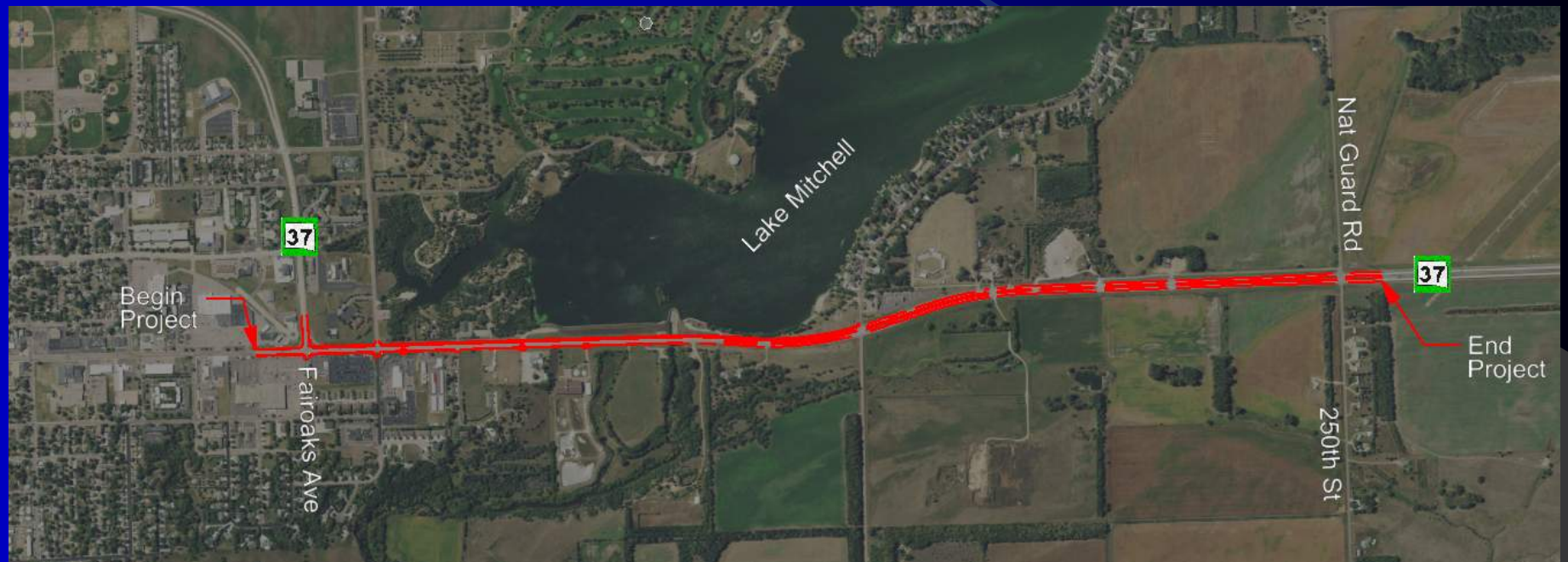
Design Project Manager

January 7, 2020



NH 0037(157)76 PCN 05UY

Project Location



S.D. Highway 37 from 560 feet south of
Fairoaks Ave. north to National Guard Rd



Why
Are
WE
Here



Purpose...

Involve You

- ✓ Provide Project Overview
- ✓ Gather Input and Comments

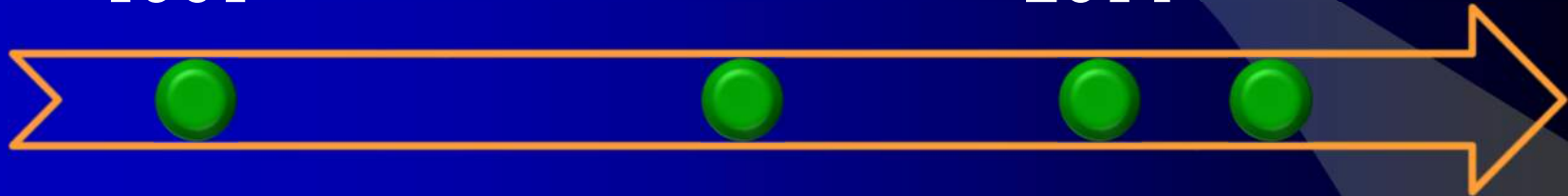


Project Background



Highway
Built
1961*

Structure
Repair
2014



Bridge
Deck
Overlay
1993

Reconstruct
2024

* 1st bridge built in 1943



CRASH HISTORY 2014-2018

31 Crashes
0 Fatalities
5 Injuries
6 Animal Hits

31 Crashes
7 Left Road
10 Intersection
8 Other

- ✓ Weighted Crash Rate = **1.75**
- ✓ Statewide Crash Rate Urban Principal Arterial = **1.95**

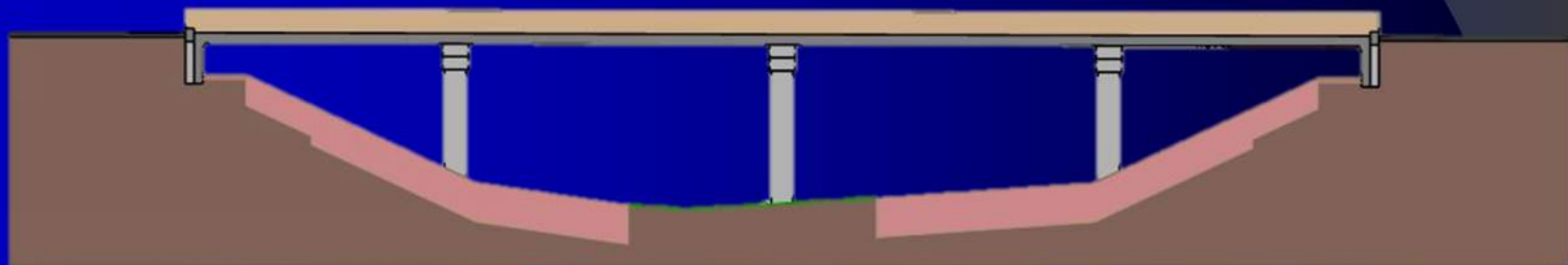


TRAFFIC

2018 ADT = **4914**

2044 Projected = **7248**

8.9% Trucks



What Needs Fixing



Concrete Pavement



Two bridges



What's The Plan



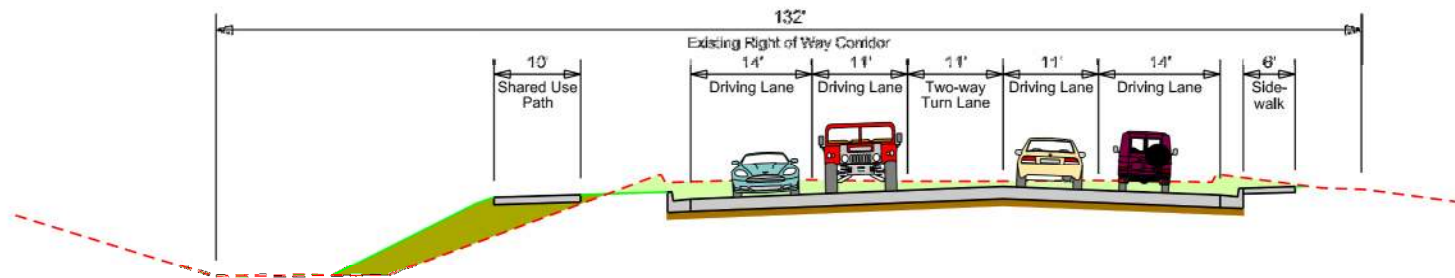
The Plan is...

- ✓ **Reconstruct highway**
 - Concrete pavement
 - Storm sewer
 - Lighting and signals
 - Sidewalk and shared use path
 - Improve Lake Mitchell shore line
- ✓ **New bridge over Firesteel Creek**



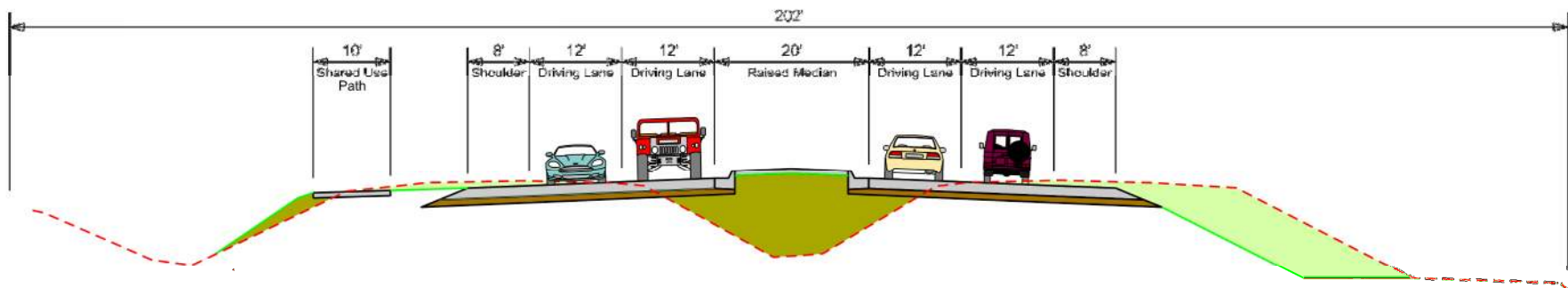


TYPICAL GRADING SECTION (Fairoaks to Firesteel Creek)

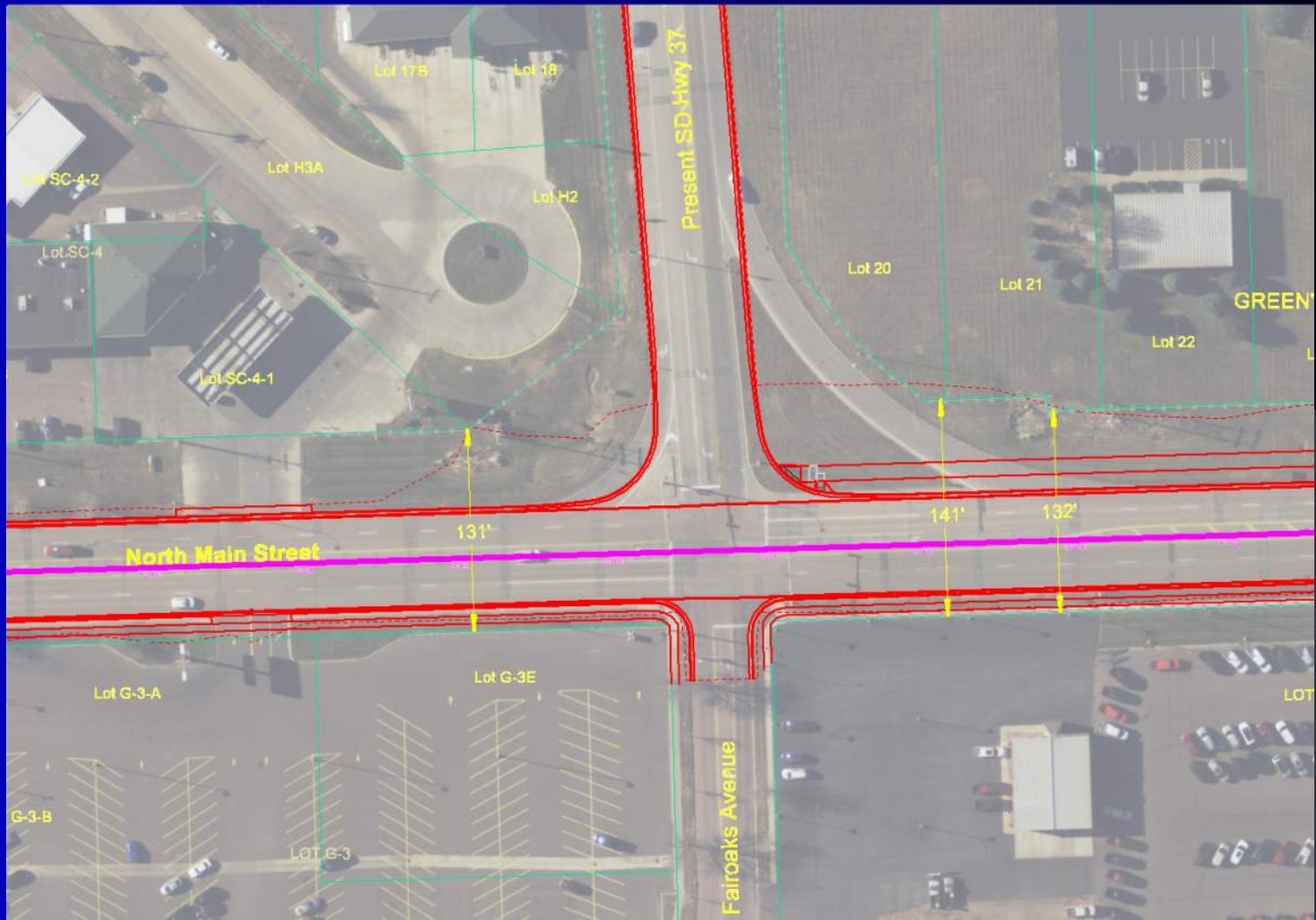




TYPICAL GRADING SECTION (Harmon Drive to National Guard Road)



Fairoaks (N. Main) Intersection



Right of Way

- ✓ Existing corridor
 - 132' Beginning to Water Treatment Plant
 - 202' WTP to National Guard Rd
- ✓ Temporary Easements



See
Handout



Utility Coordination

- ✓ Water & Sewer
- ✓ Electric
- ✓ Gas
- ✓ Tele / Fiber



Encroachments



See
Handout



National Environmental Policy Act (1969)

- ✓ Social
- ✓ Economic
- ✓ **Public Involvement**
- ✓ Environment



See
Handout



Environment

- ✓ Section 4(f)
- ✓ Section 106
- ✓ **Wetlands**
- ✓ Threatened/Endangered
- ✓ Contaminated Material



See
Handout



Construction Traffic Control

SD Hwy 37 Remains Open

Phased Construction

Temporary Signals

Flaggers





Remaining Schedule



Project Schedule



Landowner Meetings



- ✓ Individual Meetings
- ✓ Impacts to Property



See
Handout



Estimated Cost

\$16.21 Million



Questions or Comments

by **January 21, 2020**

Neil Schochenmaier
South Dakota Department of Transportation
Office of Road Design
700 East Broadway Avenue
Pierre, South Dakota 57501
neil.schochenmaier@state.sd.us

Public Meeting Information available at:
<https://dot.sd.gov/projects-studies/projects/public-meetings>

