

Public Meeting

US Highway 12
From Morrystown East 9 Miles
Corson County

NH 0012(206)112 PCN 05HW

Neil Schochenmaier, PE
Design Project Manager

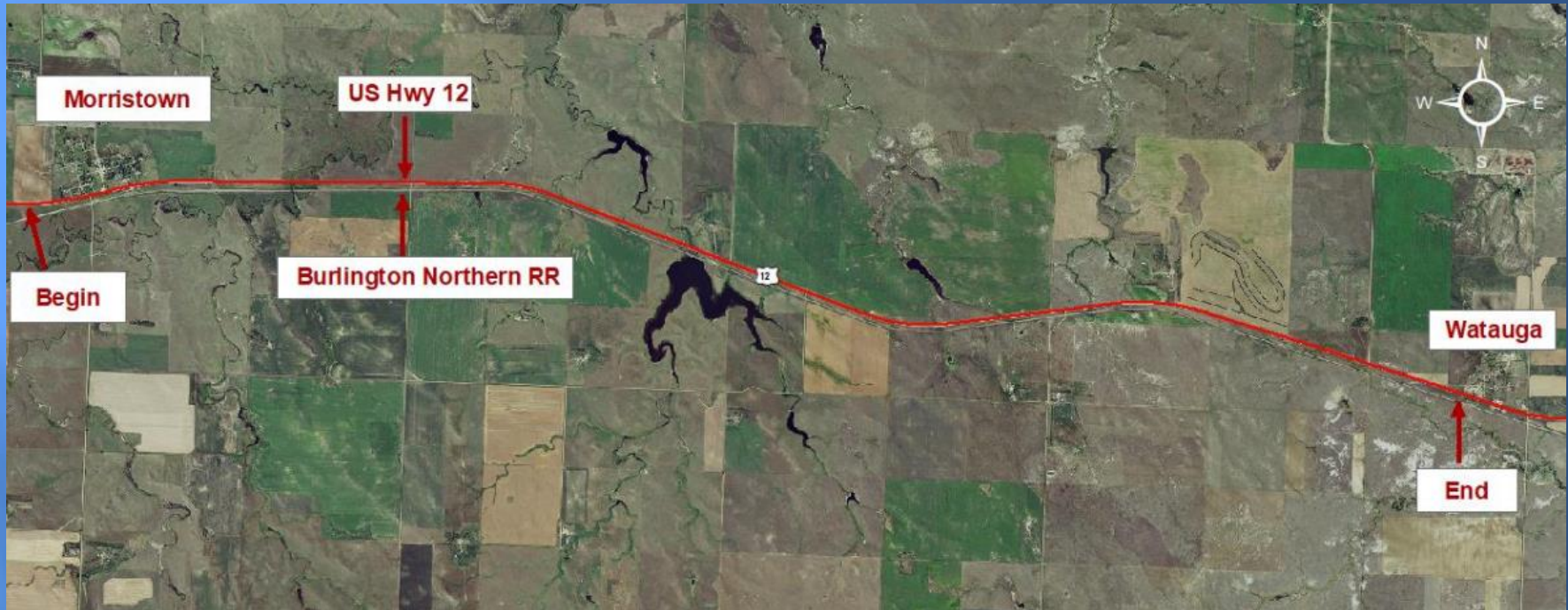
June 20, 2019



Purpose of the Meeting

- **Involve the public in the planning and design process**
- **Provide a Project Overview**
 - Background Information
 - Proposed Project
 - Project Schedule
- **Gather Input and Comments**

Project Limits



Background Information

- **Grading & Structures in 1949**
- **Resurfaced in 1959 & 1988 & 2006**

Traffic

- **2018 Average Daily Traffic (ADT) = 512**
- **2038 Projected ADT = 699**
- **23.0% Average Daily Truck Traffic**

Crash History

- **5 Year Period from 2014 to 2018**
 - 9 Reported Crashes
 - 6 Animal Hit
 - 2 Overturn Off Road Crash
 - 1 Sideswipe Opposite Direction Crash
 - 0 Fatalities
 - Reported Crash Rate = 1.54
- **Rural Principal Arterial**
 - Statewide Weighted Crash Rate = 1.45
crashes per million vehicle miles of travel

Highway Deficiencies

- Vertical Curves
- Narrow Shoulders – 2 feet
- Surfacing
- Structures



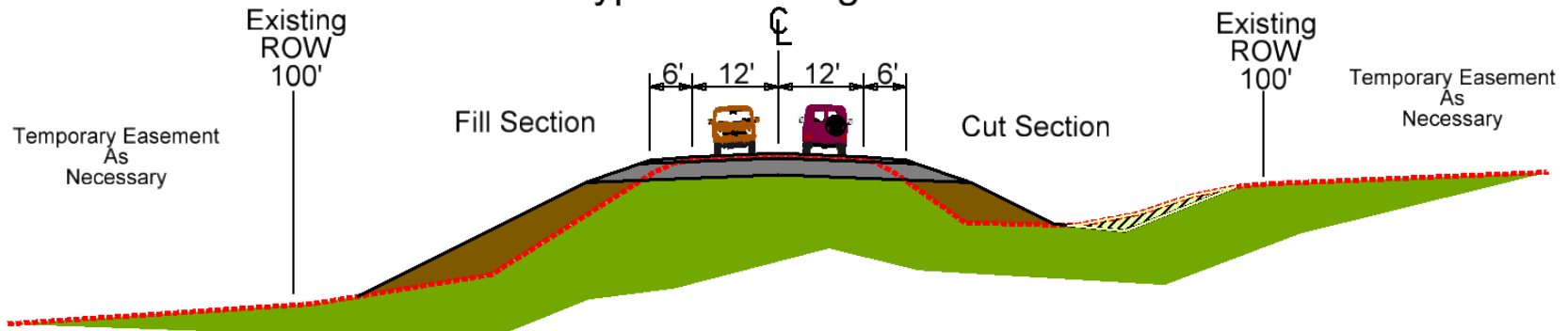
Proposed Improvements

- Widen Roadway – 6 feet Shoulders
- Replace Structure over Hay Creek
- Replace Fence and Culverts
- Interim Surfacing (final surfacing planned 2024)



Proposed Typical Section

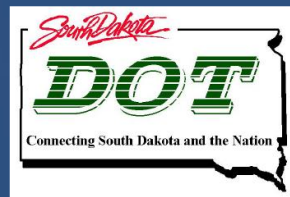
US Highway 12
Typical Grading Section



Access Management

- To provide safe, efficient access to streets and highways
- Limit number of direct accesses to major roadways

See Handout



Right of Way (ROW)

- **Existing Width**
 - 85' to 100' ROW within Morristown
 - 200' or more ROW for a majority of the corridor
- **Additional ROW is not anticipated at this time.**
- **Temporary Easements as needed for construction**

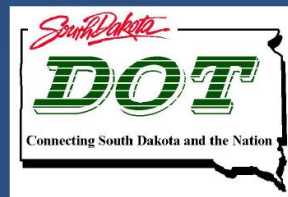
See Handout



Encroachments

- **Encroachments - Private Property Located Within the Public ROW**
 - Federal Highway Regulations
 - Safety
- **Examples of Encroachments**
 - Signs
 - Private Use (Parking)
 - Landscaping Items
- **Owners of Encroachments will be Notified by the Mobridge Area Office**

See Handout



Utility Coordination

- **Some Utilities may need to be relocated**
- **Utility Companies may negotiate easements with landowners as needed**
 - Montana-Dakota Utilities Company
 - Moreau Grand Electric Cooperative
 - CenturyLink
 - West River Cooperative Telephone
 - City of Morristown

See Handout



Utility Coordination

- **Any Known Private Utilities?**
 - Waterlines
 - Drainfields
 - Septic Tanks
 - Underground Storage Tanks
 - Underground Power Lines

- **Contact SDDOT at (605) 773-3433**
Utility Coordinator: Sarah Gilkerson

See Handout

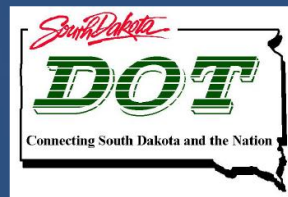


Environmental, Social & Economic Concerns

This project is being developed in accordance with applicable State and Federal environmental regulations.

In accordance with the National Environmental Policy Act of 1969 (NEPA), as amended, coordination has been initiated with State & Federal resources agencies.

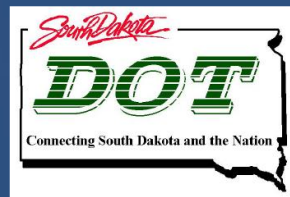
See Handout



Environmental, Social & Economic Concerns

- A cultural resources survey is being conducted.
- The project is being reviewed to determine extent of wetland impacts based on our work limits.
- **Endangered and Threatened Species:**
 - Mammals: Northern Long-Eared Bat

See Handout



Construction Traffic Control

- Traffic will be maintained during construction
- Temporary diversion around structures
- Local traffic and emergency vehicle access will be maintained at all times
- Public should expect traffic delays, use of pilot cars as necessary.

Landowner Meetings

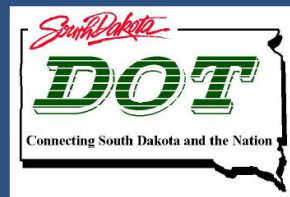
➤ Winter 2019

Will be contacted by SDDOT to schedule appointment

➤ Held with individual landowners adjacent to the project

- Driveway location / width
- Fence
- Drainage
- Trees
- Temporary Easements/ROW acquisition

See Handout



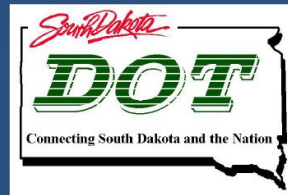
Tentative Project Schedule

Dependent on Federal Funding

Landowner Meetings	Winter 2019
Final Design	2020
Construction Easement Acquisition Process	2020
Construction	2023

Estimated Cost:	\$15.6 million
-----------------	----------------

Final Surfacing is planned for 2024



Questions or Comments

Please Submit Questions or Comments by
July 3, 2019 to:

Neil Schochenmaier
South Dakota Department of Transportation
700 East Broadway Avenue
Pierre, SD 57501

Neil.Schochenmaier@state.sd.us

Public Meeting Information @
<http://sddot.com/dot/publicmeetings/default.aspx>

