

Public Meeting

US Highway 81

From 306th St. to 303rd St. & 300th St.

Yankton County

NH 0081(103)6 PCN 04G5

Brandon Riss, PE

Road Design Engineer

October 11, 2018

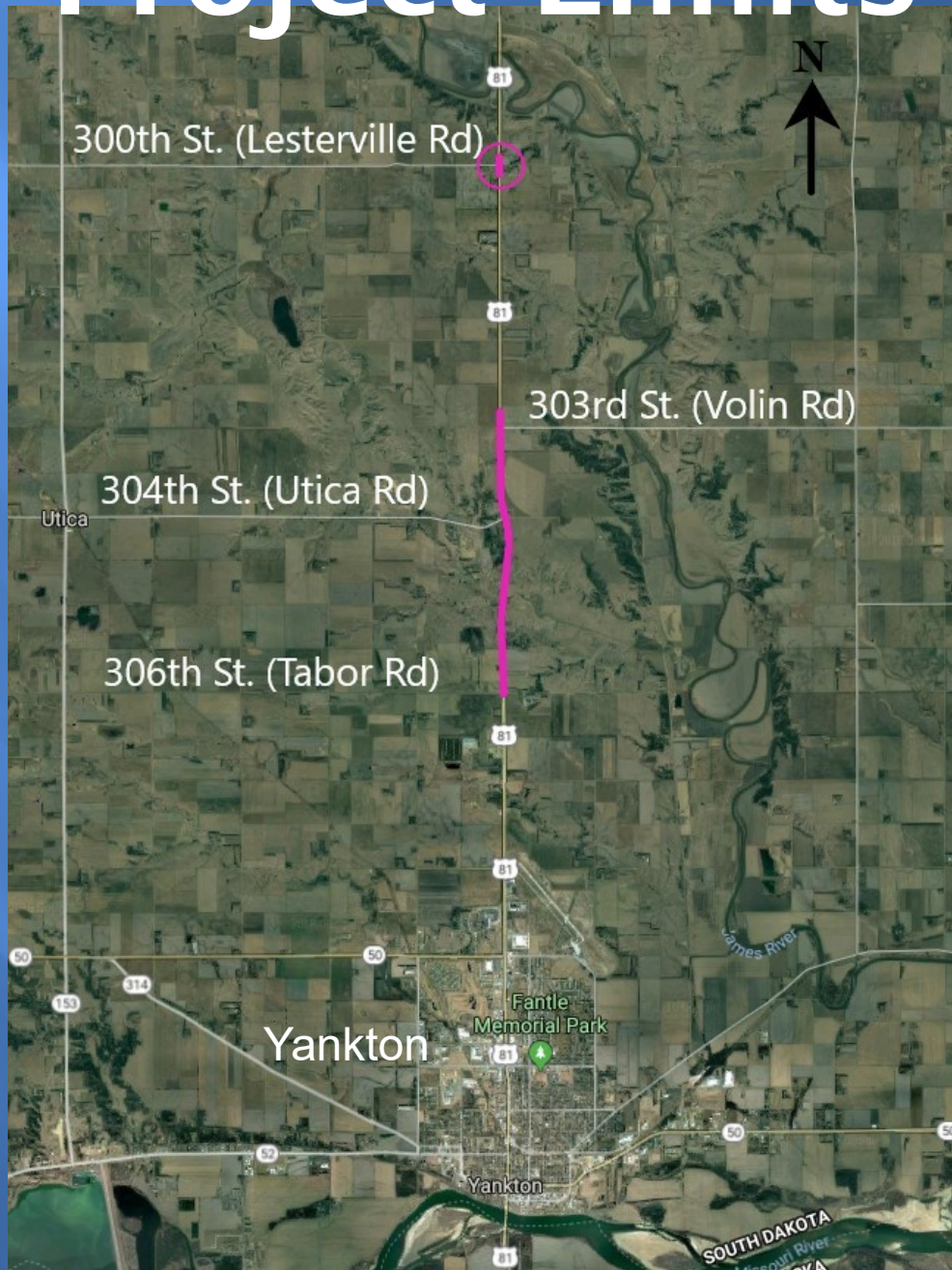


Purpose of the Meeting

- **Involve the Public in the Planning and Design Process**
- **Provide a Project Overview**
 - Background Information
 - Proposed Project
 - Project Schedule
- **Gather Input and Comments**



Project Limits



Background Information

- **Grading & Structure in 1954**
 - **Structure – 118'6" Steel Girder Bridge**
- **Asphalt Overlay in 2011**
- **Chip Seal in 2013**



Traffic

- **2017 Average Daily Traffic (ADT) = 3788**
- **2037 Projected ADT = 5145**
- **15.5% Average Truck Traffic**

Crash History

➤ 5 Year Period from 2013 to 2017

- 19 Reported Crashes
 - 7 Animal Hit
 - 2 Fixed Object Off Road
 - 2 Overturn Off Road
 - 1 Head-On
 - 3 Rear End
 - 1 Pedestrian
 - 3 Other
- 3 Fatalities
- Reported Crash Rate = 2.48

➤ Rural Principal Arterial

- Statewide Weighted Crash Rate = 1.45
crashes per million vehicle miles of travel



Highway Deficiencies

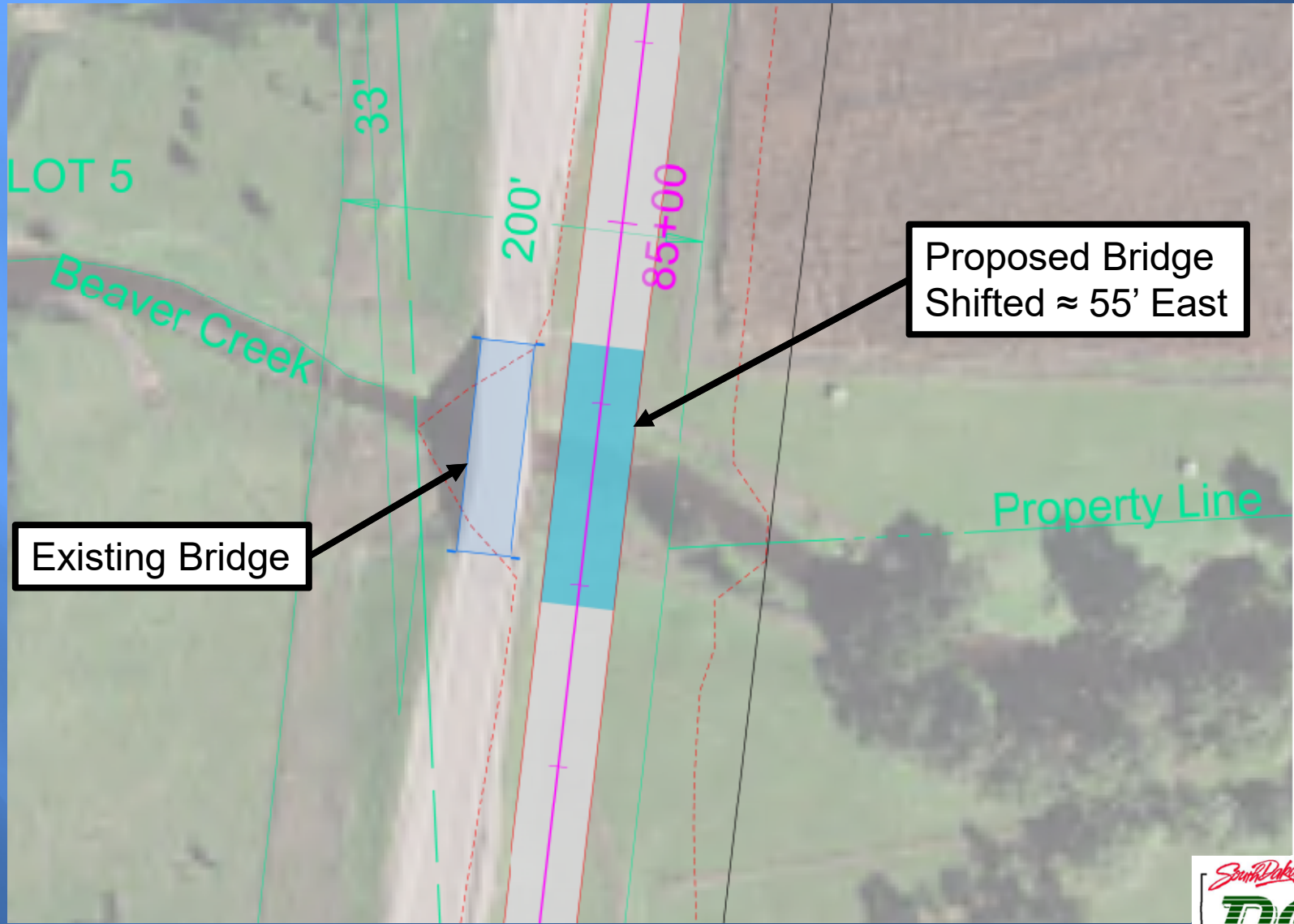
- Steep Grades – 6.5%
- Sight Distances
- Structure Width



Proposed Improvements

- Flatten Grades – 4% to 5% Max
- Replace Structure over Beaver Creek
- Replace Fence and Culverts
- Improve Sight Distances
- Truck Climbing Lanes (SB Continues to the Divided Section of US81)
- Added Left Turn Lanes at 304th, 303rd & 300th

Bridge Shifted



Access Management

- To provide safe, efficient access to streets and highways
- Limit number of direct accesses to major roadways

See Handout



Right of Way (ROW)

- **Existing Width - 200 feet**
- **Purchase additional ROW \approx 55 feet**
 - Roadway shifted to the east for new bridge
- **Temporary Easements as needed for construction**

See Handout



Encroachments

- **Encroachments - Private Property Located Within the Public ROW**
 - Federal Highway Regulations
 - Safety
- **Examples of Encroachments**
 - Signs
 - Private Use (Parking)
 - Landscaping Items
- **Owners of Encroachments will be Notified by the Yankton Area Office**

See Handout



Utility Coordination

- **Some Utilities May Need to be Relocated**
- **Utility Companies May Negotiate Easements with Landowners as Needed**

Bon Homme Yankton Electric
B-Y Water
Midco
SDN Communications

Keyston Pipeline
Nustar Energy
Northwestern Energy
Century Link

See Handout



Utility Coordination

➤ Any Known Private Utilities?

- Waterlines
- Drainfields
- Septic Tanks
- Underground Storage Tanks
- Underground Power Lines

➤ Contact SDDOT

See Handout



Environmental, Social & Economic Concerns

The National Environmental Policy Act of 1969 (NEPA) requires that federally funded projects be reviewed to determine the social, economic, and environmental consequences of the action. Public involvement is beneficial to the implementation of a project's NEPA process. This project is being developed in accordance with applicable State & Federal environmental regulations. **Your input** on the following will aid in the project's development and NEPA review.

Section 4(f) Property

The project was reviewed to determine potential impacts to Section 4(f) properties, i.e. publicly owned parks, recreational areas, wildlife & waterfowl refuges, or public & private historical sites. **No Section 4(f) properties have been identified along the project.**

Contaminated Materials

No contaminated materials have been identified along the project, to date. If you have information on contaminated materials, or underground/above ground storage tanks that could be encountered during construction, please let us know.

See Handout



Environmental, Social & Economic Concerns

Section 106

Section 106 of the National Historic Preservation Act requires Federal actions to take into account the effects of project undertakings on historic properties. **The project has not been cleared yet for Section 106. A cultural/historic survey is currently being conducted by the Archaeological Research Center. The State Historic Preservation Office will review the results of the survey to determine potential impacts to historic properties or known cultural sites as a result of the project.**

Wetlands

Federal regulations require that unavoidable wetland impacts caused by highway construction be mitigated. **A wetland determination is being conducted for this project. The SDDOT will work to avoid, minimize, and mitigate wetland impacts as a result of the project.** If you are interested in creating or restoring wetlands on your property, please complete the Wetland Mitigation Registry Form in the handouts.

See Handout



Environmental, Social & Economic Concerns

Threatened & Endangered Species

The U.S. Fish & Wildlife Service will review the project to determine if it will impact the following species that are known to occur in Yankton County:

- Birds: Least Tern, Pipe Plover, Whooping Crane, Red Knot
- Mammals: Northern Long-eared Bat
- Fish: Pallid Sturgeon
- Clams – Higgens Eye, Scaleshell Mussel
- Plants: Western Prairie-Fringed Orchid

Awaiting a final determination but at this time no impacts are anticipated to these species by the project.



Red Knot



Western Prairie-Fringed Orchid



Higgens Eye

See Handout



Construction Traffic Control

- Traffic is to be Maintained Through the Project During Construction
- US81 Alignment Shifted to the East to Allow Traffic During Construction



Landowner Meetings

- **Winter/Spring of 2019**
 - Will be contacted by SDDOT to schedule appointment
- **Held with Individual Landowners Adjacent to the Project**
 - Driveway location / widths
 - Fence
 - Drainage
 - Trees
 - Temporary Easements or ROW acquisition

See Handout



Tentative Project Schedule

Dependent on Federal Funding

Landowner Meetings

Winter/Spring 2019

Final Design

Spring 2019

ROW Acquisition
Process

2019/2020

Construction

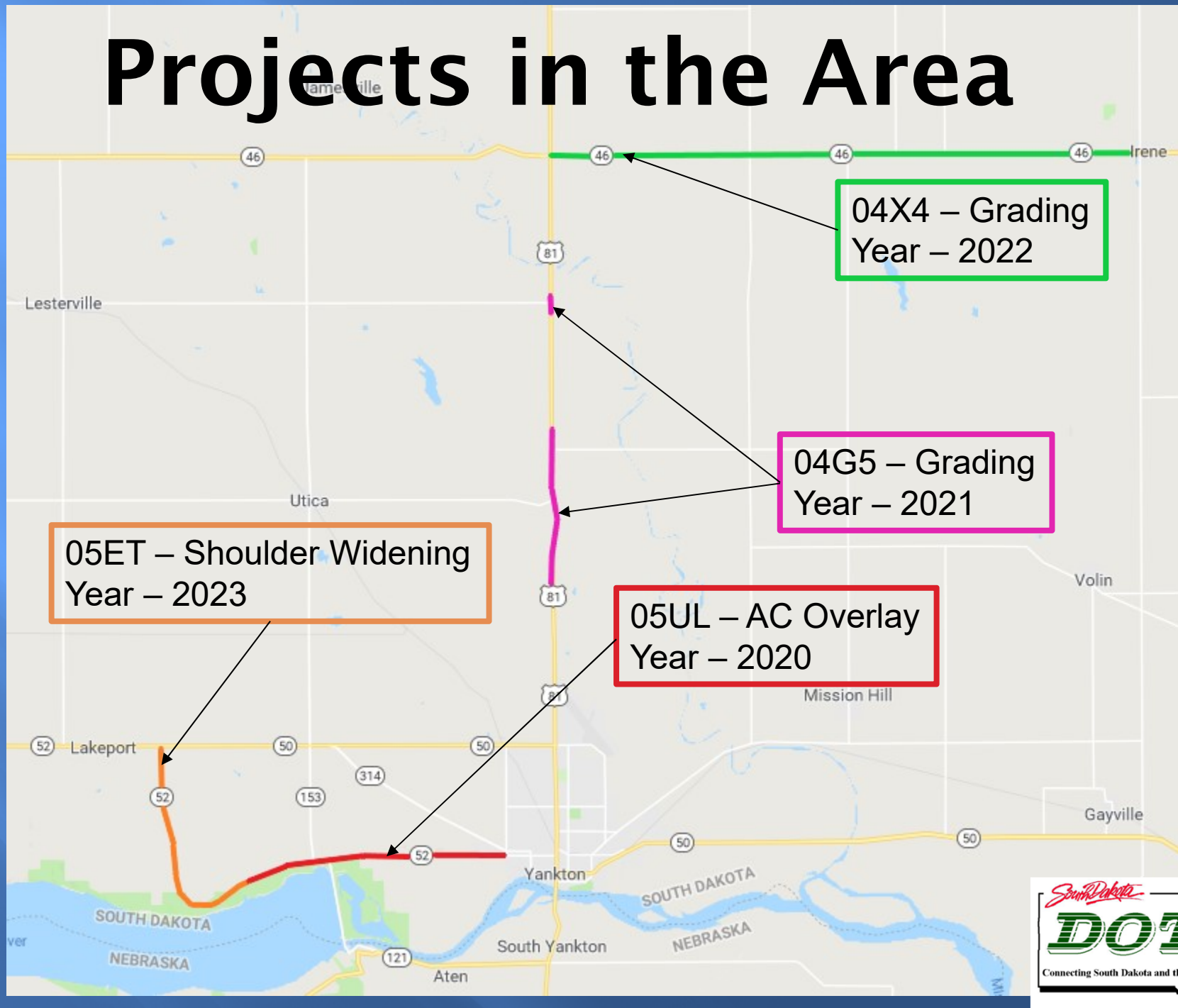
2021

Estimated Cost:

\$7.7 million



Projects in the Area



Questions or Comments

Please Submit Questions or Comments by
October 26, 2018 to:

Cary Cleland
South Dakota Department of Transportation
5316 W 60th St N
Sioux Falls, SD 57107
Cary.Cleland@state.sd.us

Public Meeting Information @
<http://sddot.com/dot/publicmeetings/default.aspx>

