

Public Meeting

US Highway 18/281
0.8 miles North of Pickstown over
St. Francis Bay &
Intersections in Lake Andes
Charles Mix County

NH 0018(203)333 PCN 04V9

Steve Johnson, PE
Bridge Design Program Manager

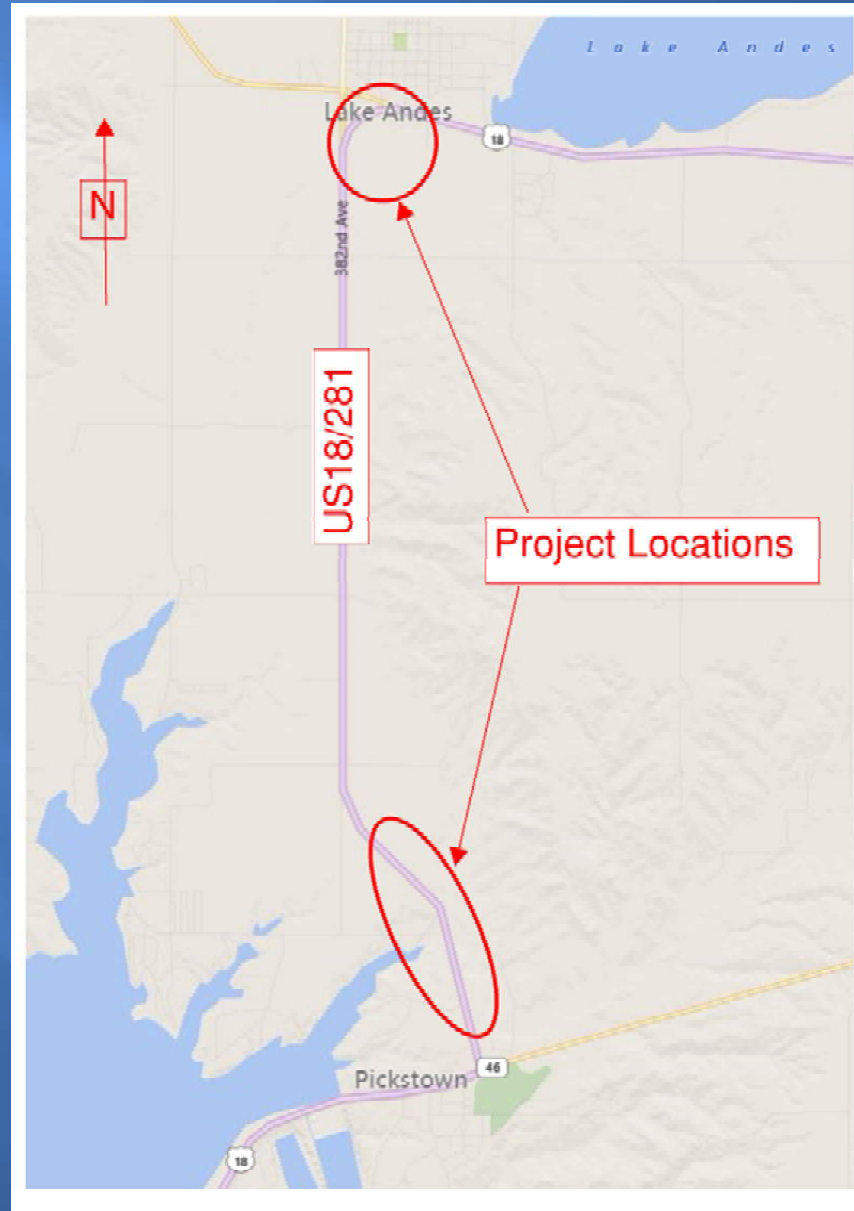
November 2, 2017



Purpose of the Meeting

- **Involve the public in the planning and design process**
- **Provide a Project Overview**
 - Background Information
 - Proposed Project
 - Project Schedule
- **Gather input and comments**

Project Limits



Background Information

- **Grading & Structures in 1947**
- **Resurfaced in 2003**
- **Chip Seal in 2013**



Traffic

- **2016 Average Daily Traffic (ADT) = 1310**
- **2041 Projected ADT = 2030**
- **20.1% Average Truck Traffic**

Crash History

➤ 5 Year Period from 2012 to 2016

- 17 Reported Crashes
 - 10 Animal Hits
 - 1 DUI, 2 fatalities
 - 2 weather related
 - 2 distracted driving
 - 1 rear end
 - 1 evasive maneuver to avoid a rear end
- Reported Crash Rate = 2.36

➤ Rural Major Arterial

- Statewide Weighted Crash Rate = 1.48
crashes per million vehicle miles of travel



Highway Deficiencies

- **Substandard vertical alignment**
- **Aging structure**
- **Surface condition**
- **Intersection geometrics in Lake Andes**



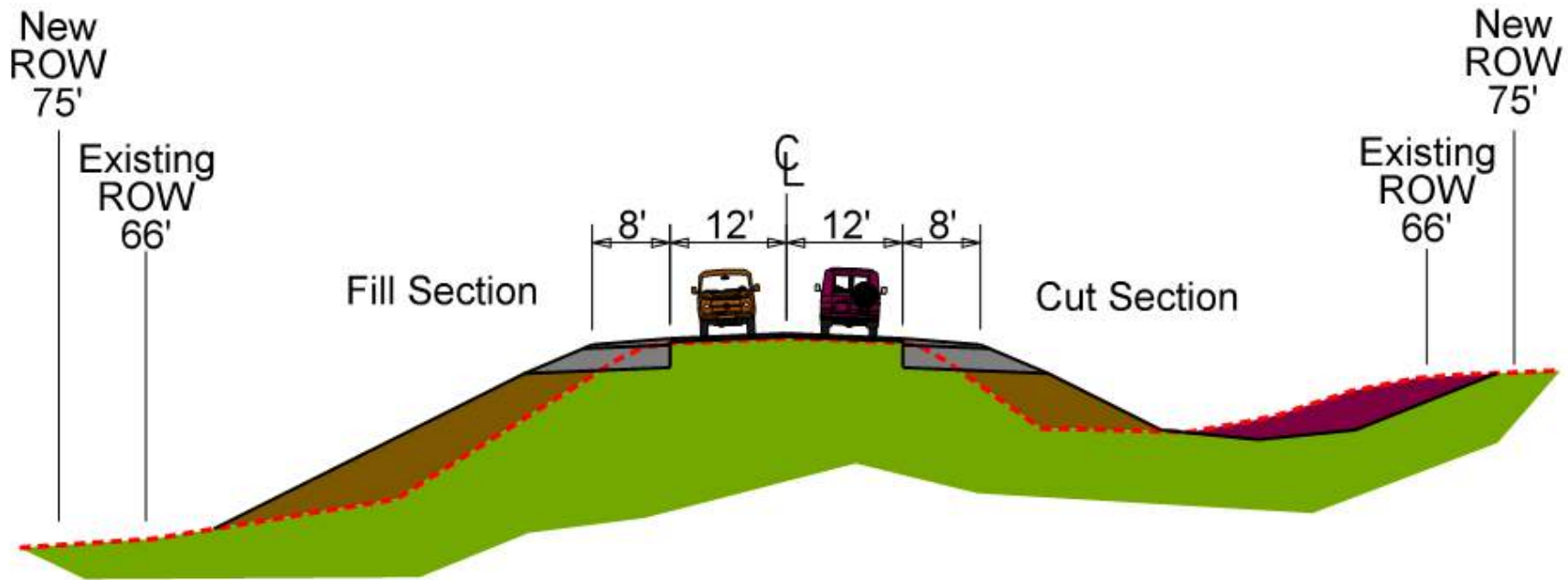
Proposed Improvements

- **Regrade vertical curves**
- **Replace structure over St. Francis Bay**
- **Re-align intersections at Lake Andes**
- **Pipe work**
- **Interim surfacing (final surfacing planned 2022)**

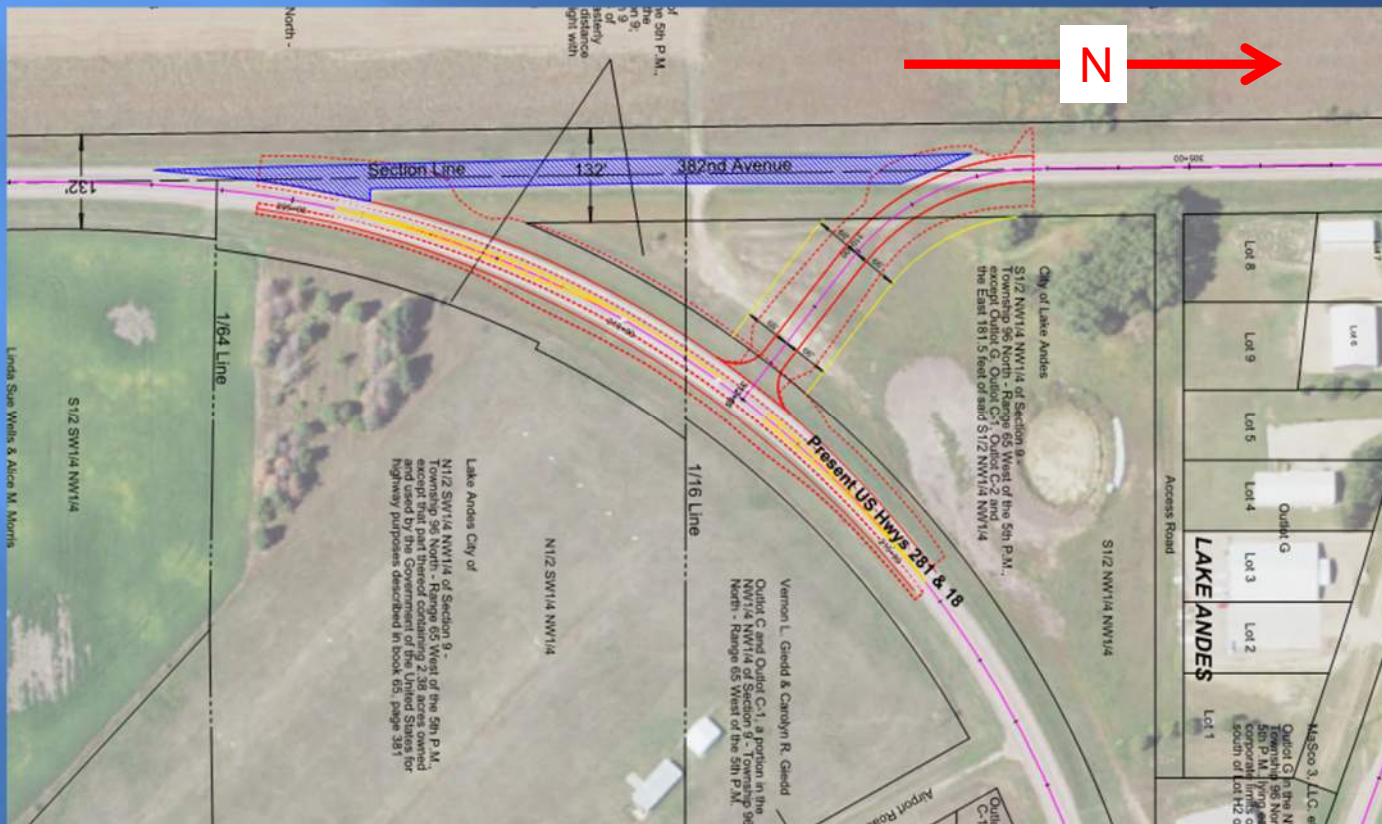


Proposed Typical Section

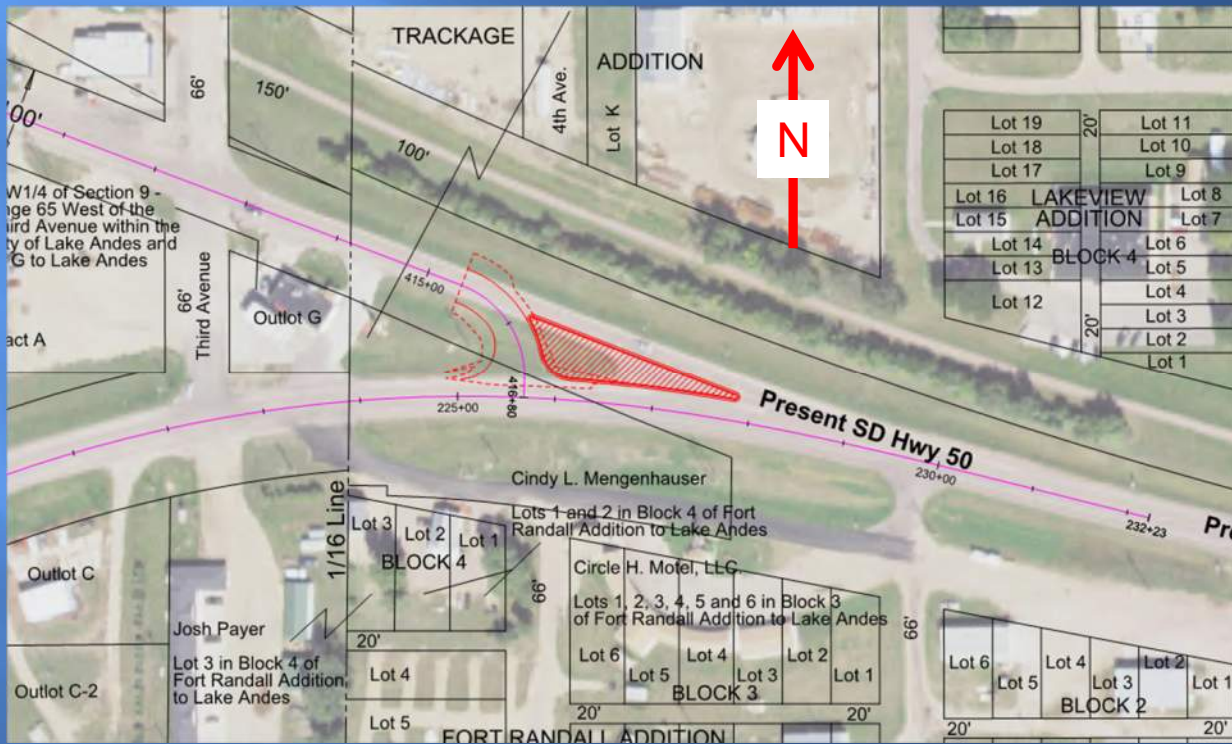
TYPICAL GRADING SECTION



382nd Ave Intersection Relocation in Lake Andes



SD50 Intersection Modification in Lake Andes



Access Management

- To provide safe, efficient access to streets and highways
- Limit number of direct accesses to major roadways

See Handout



Right of Way (ROW)

- Existing width on US18 - 132 feet
- Purchase additional ROW - 150 feet
- Temporary easements as needed for construction

See Handout



Encroachments

- **Encroachments - private property located within the public ROW**
 - Federal Highway Regulations
 - Safety
- **Examples of encroachments**
 - Signs
 - Private use (parking)
 - Landscaping items
- **Owners of encroachments will be notified by the Mitchell Area office**

See Handout



Utility Coordination

- **Some utilities may need to be relocated**
- **Utility companies may negotiate easements with landowners as needed**

Randall Community Water District

Charles Mix Electric

Fort Randall Telephone

Northwest Energy

WAPA

City of Lake Andes

Town of Pickstown

See Handout



Utility Coordination

- **Any known private utilities?**
 - Waterlines
 - Drainfields
 - Septic tanks
 - Underground storage tanks
 - Underground power lines

- **Contact SDDOT**

See Handout



Environmental, Social & Economic Concerns

The National Environmental Policy Act of 1969 (NEPA) requires that federally funded projects be reviewed to determine the social, economic, and environmental consequences of the action. Public involvement is beneficial to the implementation of a project's NEPA process. This project is being developed in accordance with applicable State & Federal environmental regulations. Your input on the following will aid in the project's development and NEPA review.

Section 4(f) Property

The project will be evaluated to determine potential impacts to Section 4(f) properties, i.e. publicly owned parks, recreational areas, wildlife & waterfowl refuges, or public & private historical sites.

Contaminated Materials

No contaminated materials have been identified along the project to date. If you have information on contaminated materials, or underground/above ground storage tanks that could be encountered during construction, please let us know.

See Handout



Environmental, Social & Economic Concerns

Section 106

Section 106 of the National Historic Preservation Act requires Federal actions to take into account the effects of project undertakings on historic properties. The project is being evaluated for potential impacts to historic properties.

Wetlands

Federal regulations require that unavoidable wetland impacts caused by highway construction be mitigated. The project is being evaluated for potential impacts to waters and wetland. If you are interested in creating or restoring wetlands on your property, please complete the Wetland Mitigation Registry Form in the handouts.

See Handout



Environmental, Social & Economic Concerns

Threatened & Endangered Species

The U.S. Fish & Wildlife Service will review the project to determine if it will impact the following species that are known to occur in Charles Mix County:

Birds

- Whooping Crane
- Rufa Red Knot
- Piping Plover
- Least Tern



See Handout



Environmental, Social & Economic Concerns

Threatened & Endangered Species

The U.S. Fish & Wildlife Service will review the project to determine if it will impact the following species that are known to occur in Charles Mix County:

Mammals

- Northern Long-eared Bat



Fish

- Pallid Sturgeon



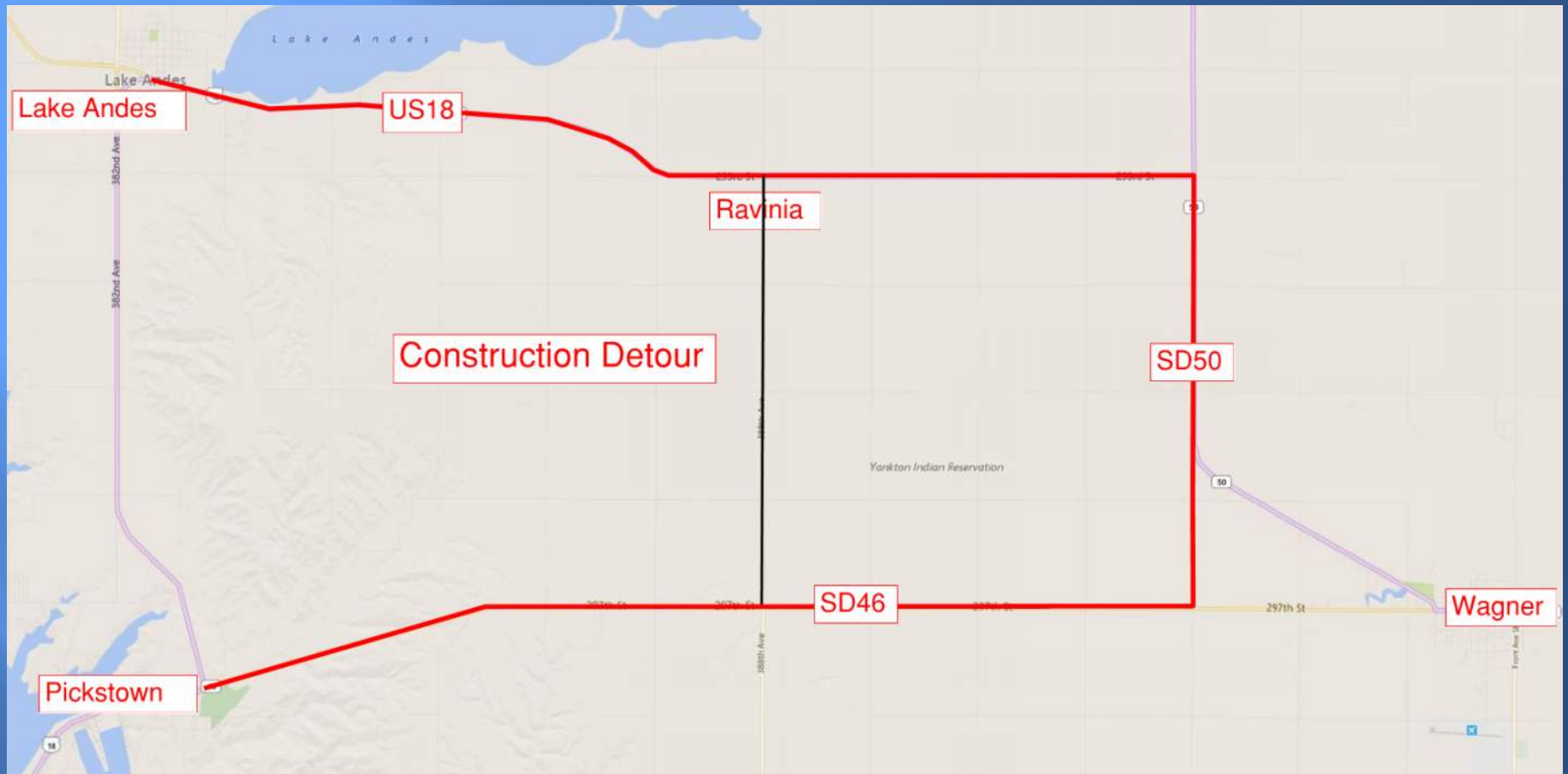
See Handout



Construction Traffic Control

- Bridge will be closed during construction
- Begin construction in spring or begin construction after Labor Day?

Construction Detour



Landowner Meetings

➤ Spring 2018

- Landowners will be contacted by SDDOT to schedule appointment

➤ Held with individual landowners adjacent to the project

- Driveway location / widths
- Fence
- Drainage
- Trees
- Temporary easements or ROW acquisition

See Handout



Tentative Project Schedule

Dependent on Federal Funding

Landowner Meetings

Spring 2018

Final Design

2018-2019

**ROW Acquisition
Process**

2019-2020

Construction

2021

Estimated Cost:

\$3.3 million



Questions or Comments

Please Submit Questions or Comments by
November 16, 2017 to:

Cary Cleland

South Dakota Department of Transportation

5316 W 60th St North

Sioux Falls, SD 57106

Cary.Cleland@state.sd.us

Public Meeting Information @

<http://sddot.com/dot/publicmeetings/default.aspx>

