

# Public Meeting

**U.S. Highway 12 through Selby  
NH 0012(297)209, PCN 077U**

**Brace Prouty  
Project Development**

**4/19/22**

# Purpose of the Meeting

**Involve the public  
in the planning  
and design process**

**Provide a Project  
Overview**

**Gather Input and  
Comments**

- **Background Information**
- **Proposed Project**
- **Project Schedule**

# Project Limits

Through Selby



# Background Information

Grading in 1969

Last Surface Improvements in 2009



# Traffic

2019 Average Daily Traffic (ADT) =  
2,229

2038 Projected ADT = 2,285

29.8% Average Truck Traffic

# Crash History

## 5 Reported Crashes

- 2 Intersection Crashes
- 2 Rear End Crashes
- 1 Side Swipe Crashe

0 Fatalities

**5 Year Period  
from 2016 to  
2020**

- Reported Crash Rate = 1.72

- Statewide Weighted Crash Rate = 1.46 (crashes per million vehicle miles of travel)

**Rural Principal  
Arterial**

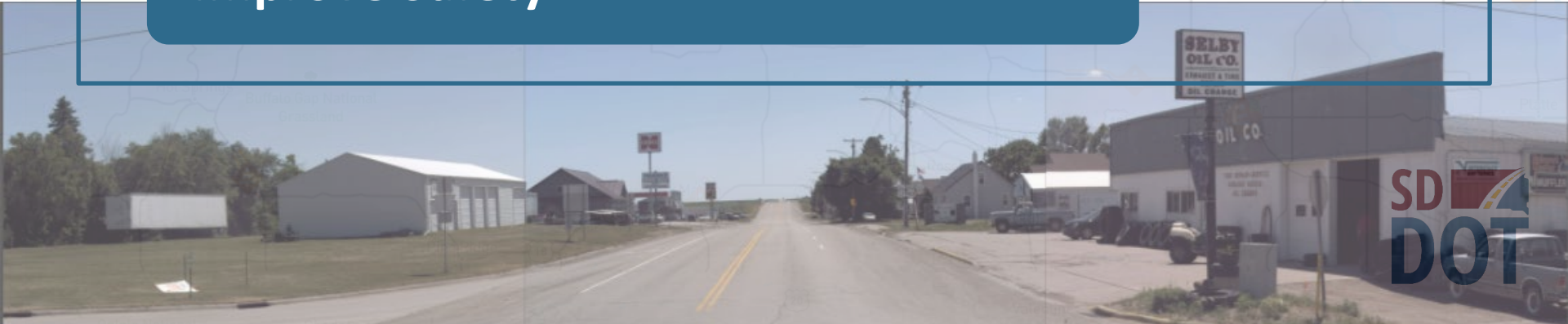
# Why We Are Reconstructing

Pavement Condition

Lack of Pedestrian Facilities

Drainage

Improve Safety



# Proposed Improvements

Modify four lane to three lane with  
two-way center turn lane

Add sidewalks

New storm sewer



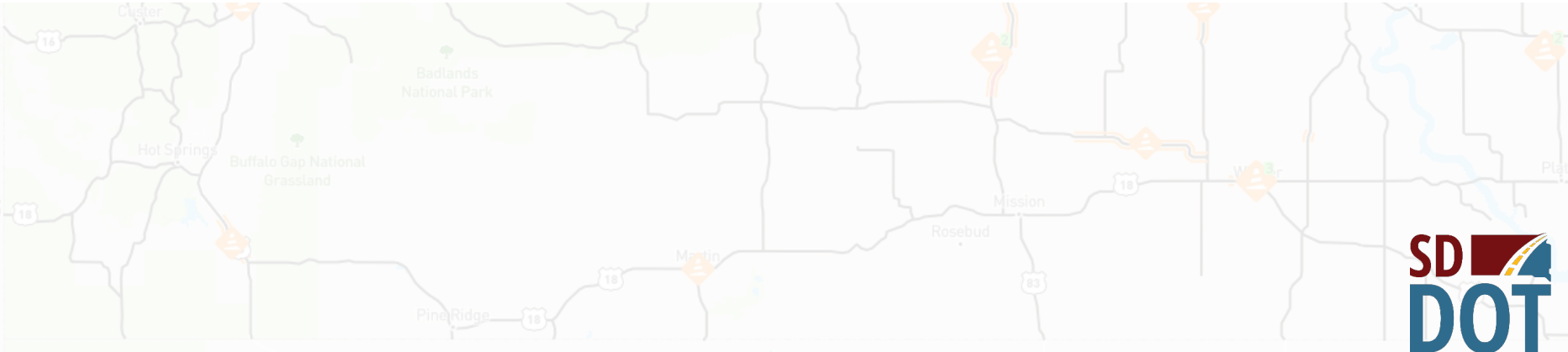
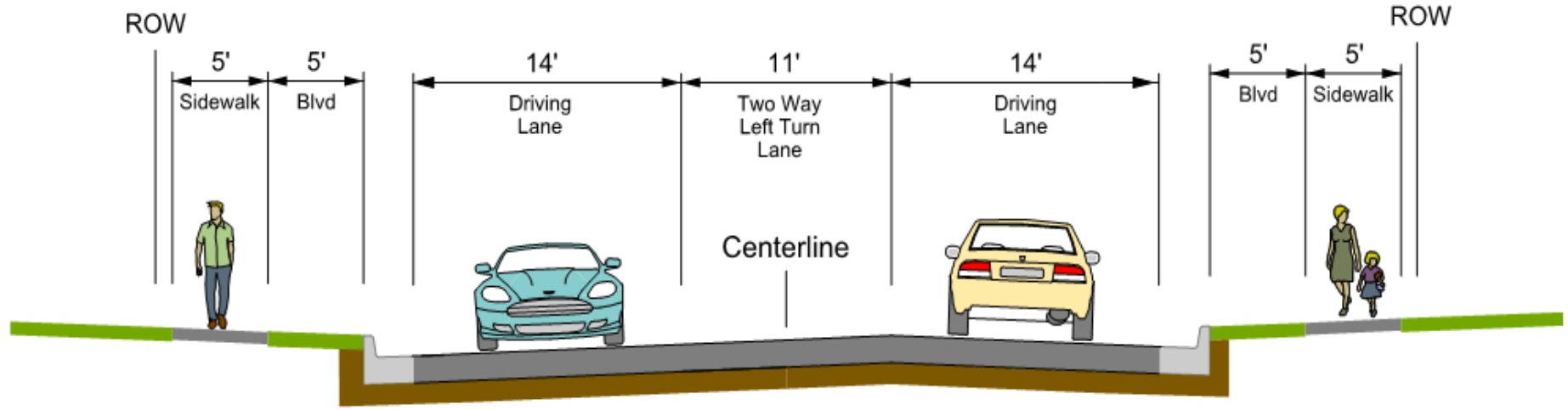
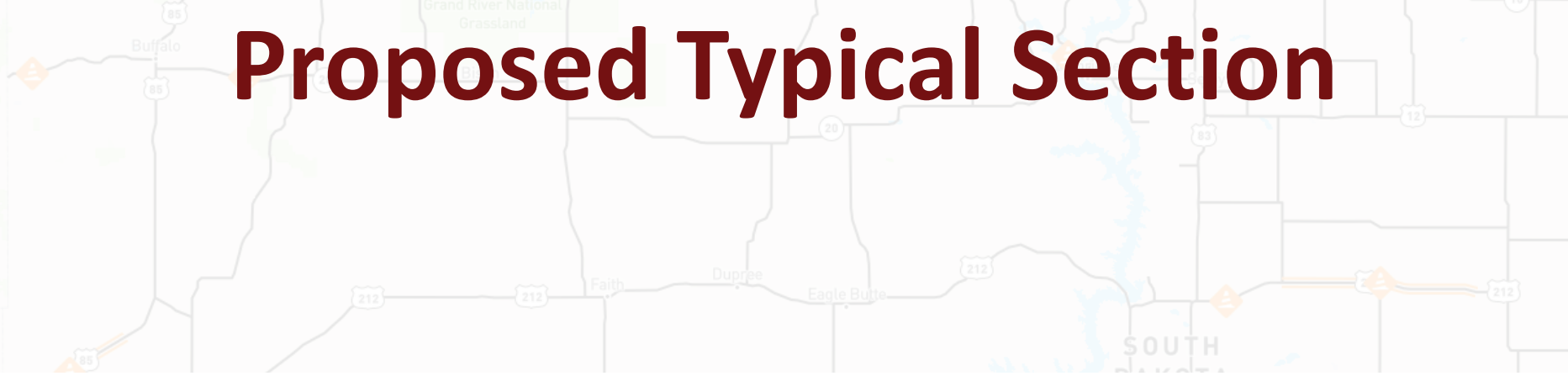
# Proposed Improvements

Roadway lighting

Concrete overlay on bridge over railroad

Portland cement concrete surfacing

# Proposed Typical Section

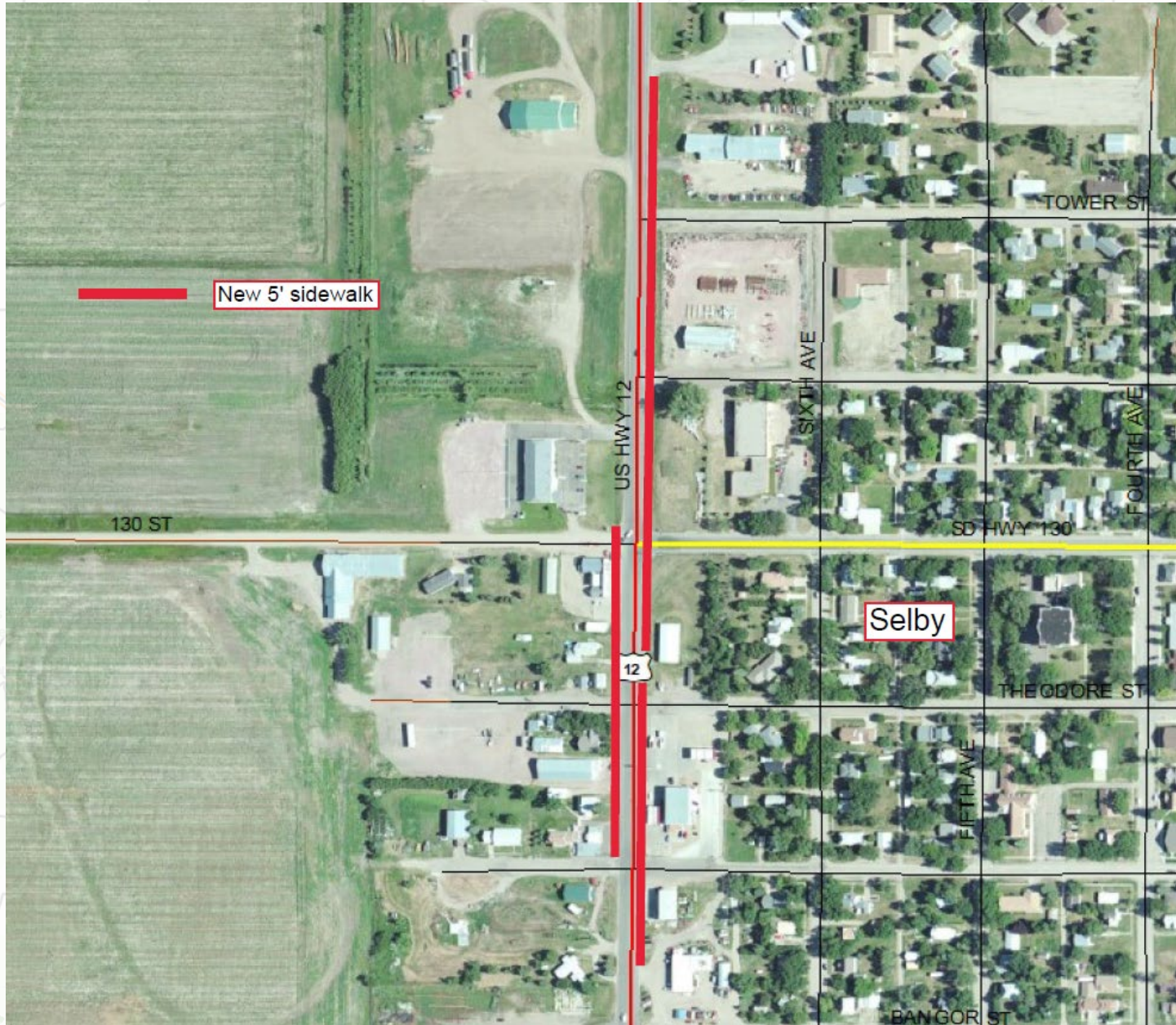


# 3 Lane Roadway Advantages

- Traffic Analysis – Greatest benefit/cost ratio
- Capable of safely and efficiently handling 16,000+ vehicles/day
- Provides safe storage for left turning vehicles
- Reduces the number of conflict points for left turning vehicles and for vehicles entering the roadway
- Reduces the speed differential between vehicles
- Boulevard provides Snow Storage
- Reduces crossing width for pedestrians
- Reduce ROW impacts



# Proposed Pedestrian Facilities



# Roadway Lighting

Replace Existing  
Lighting  
LED





# Access Management

**Manage location and number of access points**

Provide safe,  
efficient access to  
streets and  
highways

Relocating,  
combining and  
eliminating access  
points

**See Handout**

# Right of Way (ROW)

Existing width varies 66-200 feet

Purchase additional ROW as needed

Temporary easements as needed for construction

**See Handout**

# Encroachments

**Private  
Property in  
Public ROW**

**Federal Highway Regulations for  
Safety**

**Examples**

- Signs
- Private Use (Parking)
- Landscaping Items

**Notification**

**Owners of Encroachments will be  
notified by the Mobridge Area  
Office**

**See Handout**

# Utility Coordination

Some Utilities  
may need to be  
relocated

Utility Companies  
negotiate  
easements with  
landowners

CamWal Electric Coop

MDU

Midco

Venture Communications

City of Selby

Web Water Development

See Handout

# Utility Coordination

**Any Known  
Private Utilities?**

**Contact SD DOT**

**Water Lines**

**Drain Fields**

**Septic Tanks**

**Underground Storage Tanks**

**Underground Power Lines**

**See Handout**



# Environmental, Social and Economic Concerns

This project is being developed in accordance with applicable State and Federal environmental regulations.

- **National Environmental Policy Act of 1969 (NEPA), as amended.**
- **Section 106 of the National Historic Preservation Act** (Project will be evaluated for the presence of sites and structures.)

**See Handout**

# Environmental, Social and Economic Concerns

- **Section 404 of the Clean Water Act** (No wetland impacts anticipated.)
- **Section 4(f) of the USDOT Transportation Act of 1966** (No identified 4(f) properties adjacent to the project.)

**See Handout**

# Environmental, Social and Economic Concerns

- **Section 7 of the Endangered Species Act**

The U.S. Fish and Wildlife Service will review the project to determine if it will impact the following species that are known to occur in Walworth County:

- **Birds:** Least Tern, Piping Plover, Red Knot & Whooping Crane
- **Mammals:** Northern Long-Eared Bat

**No impacts are anticipated to these species by the project.**

**See Handout**



# Construction Traffic Control

**Open to Traffic  
Phased Construction**

**Access will be  
maintained to  
businesses and  
residents**

# Landowner Meetings

**Landowners adjacent to the project will be contacted individually by SDDOT to schedule a meeting.**

## **Discussion Items:**

- Driveway locations/widths
- Sidewalk and Curb Ramps
- Fences
- Drainage
- Trees
- Temporary easements or ROW acquisition

**See Handout**



# Tentative Project Schedule

Dependent on Federal Funding

**Spring 2024**  
Landowner  
Meetings

**Fall 2026**  
Final Design

**2026 thru  
2027**  
ROW  
Acquisition

**2028**  
Construction

Estimated Cost: \$4.2 million

# Public Input

Submit Questions and/or Comments:

by:

**April 14, 2020**



to:

Brace Prouty  
SD DOT  
700 E Broadway Ave  
Pierre, SD 57501

[Brace.Prouty@state.sd.us](mailto:Brace.Prouty@state.sd.us)

Public Meeting Information can be found at:

[https://dot.sd.gov/projects-studies/projects/public-meetings#listItemLink\\_1743](https://dot.sd.gov/projects-studies/projects/public-meetings#listItemLink_1743)

# Public Input

Please Submit Questions or Comments by  
May 3, 2022 to:

**Brace Prouty**

South Dakota Department of Transportation  
700 East Broadway Avenue  
Pierre, SD 57501

**[Brace.Prouty@state.sd.us](mailto:Brace.Prouty@state.sd.us)**

**Public Meeting Information can be found at:**

[https://dot.sd.gov/projects-studies/projects/public-meetings#listItemLink\\_1743](https://dot.sd.gov/projects-studies/projects/public-meetings#listItemLink_1743)

