

Public Meeting

NH 0034(211)404 PCN 080K
S.D. Highway 34
from Colman to Interstate 29

Megan Steever
Road Design Engineer

Tuesday, Dec. 5, 2023

1

Meeting Purpose

- Public Involvement
- Project Overview
 - Background Information
 - Proposed Project
 - Project Schedule
- Gather Input and Comments

2

Project Limits

3

Background Information

- Structure in 1963
- Grading & Interim Surfacing in 1984
- PCC Surfacing in 1985
- Low Slump Dense Concrete (LSDC) Overlay in 1997
- Dowel Bar Retrofit and Pavement Repair in 2004
- Joint and Spall repair in 2018

4

Traffic

- 2022 Average Daily Traffic (ADT) = 3,871
- 2042 Projected ADT = 4,931
- 13.7% Average Truck Traffic

5

Crash History (2017 to 2021)

59 total crashes

- 3 injury
- 56 PDO
- 7 Access Related crashes near the interchange

Crashes

Weighted Crash Rate (Urban Principal Arterial)

Statewide	1.91
S.D. Highway 34	4.12

6

Why We Are Reconstructing

Improve Safety

Accommodate increased traffic

Pavement & Structure condition



7

Proposed Improvements

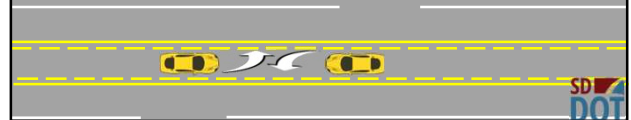
Convert 2-lane to 4-lane with raised median

Turn lanes at 471st, 472nd, & Truck Stops

Bridge Deck Low Slump Dense Concrete Overlay

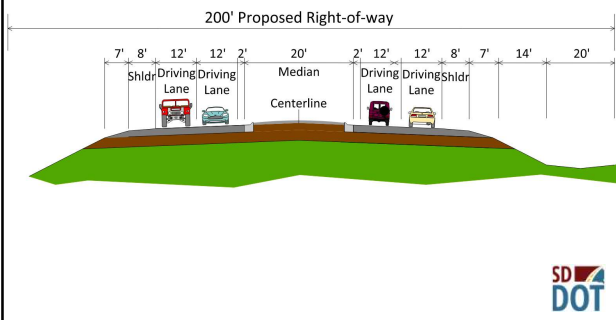
Roadway Lighting

Portland Cement Concrete Surfacing



8

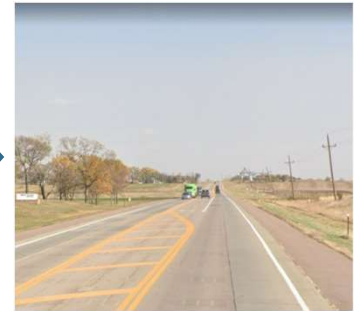
Proposed Typical Section



9

Roadway Lighting

Intersection
S.D. Highway 34
& 471st Ave



10

Access Management

Manage location and number of access points

Provide safe, efficient access to streets and highways

Relocating, combining and eliminating access points

See Handout



11

Right of Way (ROW)

Existing Width Typically 150 feet

Proposed width 200 feet

Temporary Easements as needed

Purchase additional ROW as needed

See Handout



12

Encroachments

Private Property in Public ROW	Federal Highway Regulations for Safety
Examples	<ul style="list-style-type: none"> Signs Private Use (Parking) Landscaping Items
Notification	Owners of Encroachments will be notified by the Sioux Falls Area Office

See Handout

13

Utility Coordination

<p>Some Utilities may need to be relocated</p> <p>Utility Companies negotiate easements with landowners</p>	<p>Mediacom</p> <p>Big Sioux Community Water</p> <p>East River Power Coop</p> <p>Midcontinent Communications</p> <p>Swiftel Communications</p> <p>Sioux Valley Energy</p> <p>Lumen</p> <p>Valley FiberCom</p> <p>Bluepeak</p>
---	---

See Handout

14

Utility Coordination

<p>Any Known Private Utilities?</p> <p>Contact SD DOT</p>	<p>Water Lines</p> <p>Wells</p> <p>Drain Fields</p> <p>Septic Tanks</p> <p>Underground Storage Tanks</p> <p>Underground Power Lines</p>
---	---

See Handout

15

Environmental, Social and Economic Concerns

This project is being developed in accordance with applicable State and Federal environmental regulations.

- National Environmental Policy Act of 1969 (NEPA), as amended
- Section 106 of the National Historic Preservation Act

See Handout

16

Environmental, Social and Economic Concerns

- Section 404 of the Clean Water Act (Wetland impacts anticipated)
- Section 4(f) of the USDOT Transportation Act of 1966
- Possible Temporary Easement needed at USFWS Moody County WPA
- Access to the WPA will remain open for the duration of the project

See Handout

17

Environmental, Social and Economic Concerns

- Section 7 of the Endangered Species Act
 - The U.S. Fish and Wildlife Service will review the project to determine if it will impact the following species that are known to occur in Moody County:
 - Birds: Red Knot
 - Mammals: Tricolored Bat
 - Insects: Monarch Butterfly & Dakota Skipper
 - Flowering Plants: Western Prairie Fringed Orchid

No impacts anticipated

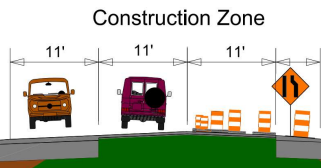
See Handout

18

Construction Traffic Control

Open to Traffic

Phased Construction (Half at a time)



19

Landowner Meetings

Landowners adjacent to the project will be contacted individually by SDDOT to schedule a meeting

Discussion Items:

- Driveway locations/widths
- Sidewalk and Curb Ramps
- Fences
- Drainage
- Trees
- Temporary Easements or ROW acquisition
- Private Utilities

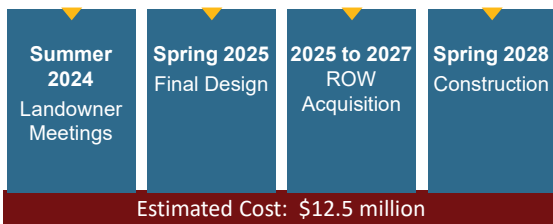
See Handout



20

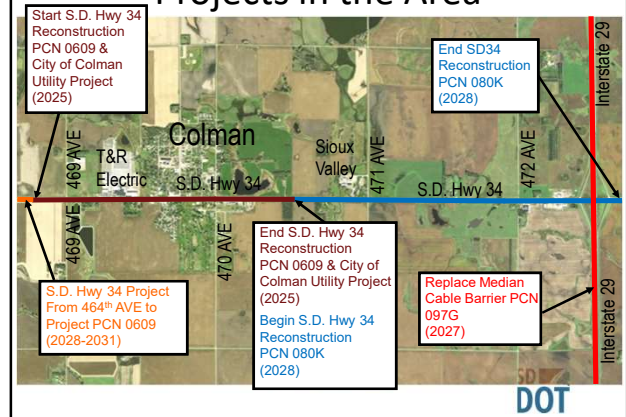
Tentative Project Schedule

Dependent on Federal Funding



21

Projects in the Area



22

Public Input

Submit Questions and/or Comments:

by:

Tuesday, Dec. 19, 2023



to:

Megan Steever
5316 W 60th St N #A
Sioux Falls, SD 57107

Megan.Steever@state.sd.us
(605) 367-4970 ext. 1802119

Public Meeting Information can be found at:
https://dot.sd.gov/projects-studies/projects/public-meetings#listItemLink_1885



23