

# Public Meeting

US Highway 81  
From 306<sup>th</sup> St. to 303<sup>rd</sup> St.  
Yankton County

NH 0081(103)6 PCN 04G5

Brandon Riss, PE  
Road Design Engineer

June 12, 2020



# Purpose of the Meeting

- **Involve the Public in the Planning and Design Process**
- **Provide a Project Overview**
  - Background Information
  - Proposed Project
  - Project Schedule
- **Gather Input and Comments**

# Project Limits



# Background Information

- **Grading & Structure in 1954**
  - **Structure – 118'6" Steel Girder Bridge**
- **Asphalt Overlay in 2011**
- **Chip Seal in 2013**



# Traffic

- **2019 Average Daily Traffic (ADT) = 3706**
- **2039 Projected ADT = 5033**
- **15.2% Average Truck Traffic**

# Crash History

## ➤ 5 Year Period from 2015 to 2019

- 23 Reported Crashes
  - 15 Animal Hit
  - 1 Fixed Object Off Road
  - 1 Side Swipe Same Direction
  - 1 Side Swipe Opposite Direction
  - 1 Angle Non-Intersection
  - 1 Pedestrian
  - 3 Other
- 1 Fatalities
- Reported Crash Rate = 1.56

## ➤ Rural Principal Arterial

- Statewide Weighted Crash Rate = 1.47  
crashes per million vehicle miles of travel



# Highway Deficiencies

- Steep Grades – 6.5%
- Sight Distances
- Structure Width

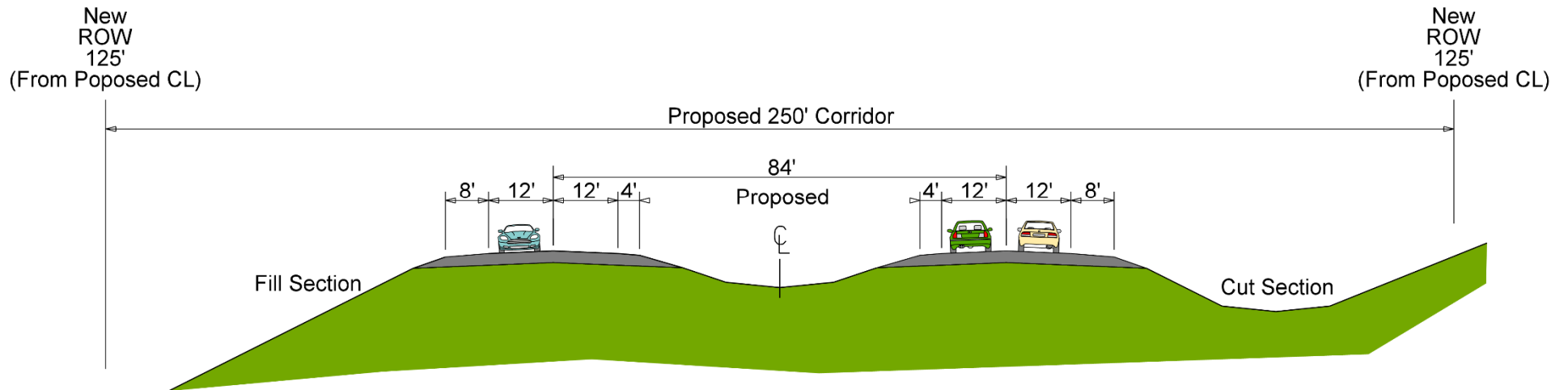


# Proposed Improvements

- 4-Lane Divided Highway
- Flatten Grades – 4% to 5% Max
- Replace Structure over Beaver Creek
- Replace Fence and Culverts
- Improve Sight Distances
- Added Left Turn Lanes at 304<sup>th</sup> & 303<sup>rd</sup>



# Proposed Typical Section



# Access Management

- To provide safe, efficient access to streets and highways
- Limit number of direct accesses to major roadways

See Handout



# Right of Way (ROW)

- **Existing Width - 200 feet**
- **Purchase additional ROW  $\approx$  50 feet**
  - Roadway shifted at various locations
- **Temporary Easements as needed for construction**

See Handout



# Encroachments

- **Encroachments - Private Property Located Within the Public ROW**
  - Federal Highway Regulations
  - Safety
- **Examples of Encroachments**
  - Signs
  - Private Use (Parking)
  - Landscaping Items
- **Owners of Encroachments will be Notified by the Yankton Area Office**

See Handout



# Utility Coordination

- **Some Utilities May Need to be Relocated**
- **Utility Companies May Negotiate Easements with Landowners as Needed**

Bon Homme Yankton Electric  
B-Y Water  
Midco  
SDN Communications

Keyston Pipeline  
Nustar Energy  
Northwestern Energy  
Century Link

See Handout



# Utility Coordination

## ➤ Any Known Private Utilities?

- Waterlines
- Drainfields
- Septic Tanks
- Underground Storage Tanks
- Underground Power Lines

## ➤ Contact SDDOT

See Handout



# Environmental, Social & Economic Concerns

The National Environmental Policy Act of 1969 (NEPA) requires that federally funded projects be reviewed to determine the social, economic, and environmental consequences of the action. Public involvement is beneficial to the implementation of a project's NEPA process. This project is being developed in accordance with applicable State & Federal environmental regulations. **Your input** on the following will aid in the project's development and NEPA review.

## Section 4(f) Property

The project was reviewed to determine potential impacts to Section 4(f) properties, i.e. publicly owned parks, recreational areas, wildlife & waterfowl refuges, or public & private historical sites. **No Section 4(f) properties have been identified along the project.**

## Contaminated Materials

**No contaminated materials have been identified along the project, to date.** If you have information on contaminated materials, or underground/above ground storage tanks that could be encountered during construction, please let us know.

See Handout



# Environmental, Social & Economic Concerns

## Section 106

Section 106 of the National Historic Preservation Act requires Federal actions to take into account the effects of project undertakings on historic properties. **The project has not been cleared yet for Section 106. A cultural/historic survey is currently being conducted by the Archaeological Research Center. The State Historic Preservation Office will review the results of the survey to determine potential impacts to historic properties or known cultural sites as a result of the project.**

## Wetlands

Federal regulations require that unavoidable wetland impacts caused by highway construction be mitigated. **A wetland determination is being conducted for this project. The SDDOT will work to avoid, minimize, and mitigate wetland impacts as a result of the project.** If you are interested in creating or restoring wetlands on your property, please complete the Wetland Mitigation Registry Form in the handouts.

See Handout





# Environmental, Social & Economic Concerns

## Threatened & Endangered Species

The U.S. Fish & Wildlife Service will review the project to determine if it will impact the following species that are known to occur in Yankton County:

- Birds: Least Tern, Pipe Plover, Whooping Crane, Red Knot
- Mammals: Northern Long-eared Bat
- Fish: Pallid Sturgeon
- Clams – Higgens Eye, Scaleshell Mussel
- Plants: Western Prairie-Fringed Orchid

**Awaiting a final determination but at this time no impacts are anticipated to these species by the project.**



Red Knot



Western Prairie-Fringed Orchid



Higgens Eye

See Handout



# Construction Traffic Control

- Traffic is to be Maintained Through the Project During Construction
- US81 Alignment Shifted to Allow Traffic During Construction



# Landowner Meetings

- **Summer/Fall of 2020**
  - Will be contacted by SDDOT to schedule appointment
- **Held with Individual Landowners Adjacent to the Project**
  - Driveway location / widths
  - Fence
  - Drainage
  - Trees
  - Temporary Easements or ROW acquisition

See Handout



# Tentative Project Schedule

Dependent on Federal Funding

---

Landowner Meetings

Summer/Fall 2020

Final Design

Winter 2020

ROW Acquisition  
Process

2021/2022

Construction

Late 2022 or 2023

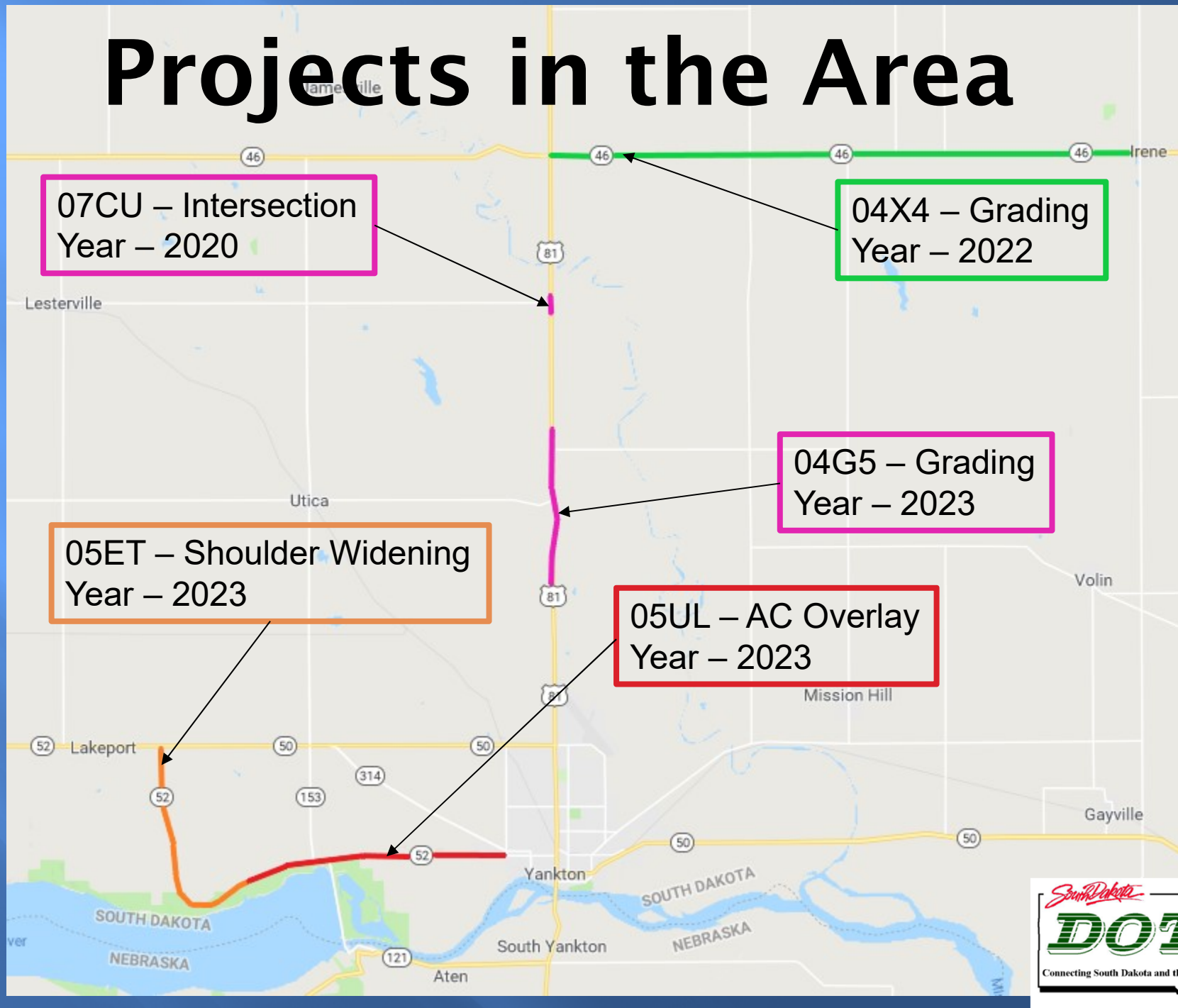
---

Estimated Cost:

\$9.9 million



# Projects in the Area



# Questions or Comments

Please Submit Questions or Comments by  
July 3, 2020 to:

Cary Cleland  
South Dakota Department of Transportation  
5316 W 60<sup>th</sup> St N  
Sioux Falls, SD 57107  
[Cary.Cleland@state.sd.us](mailto:Cary.Cleland@state.sd.us)

Public Meeting Information @  
<http://sddot.com/dot/publicmeetings/default.aspx>

