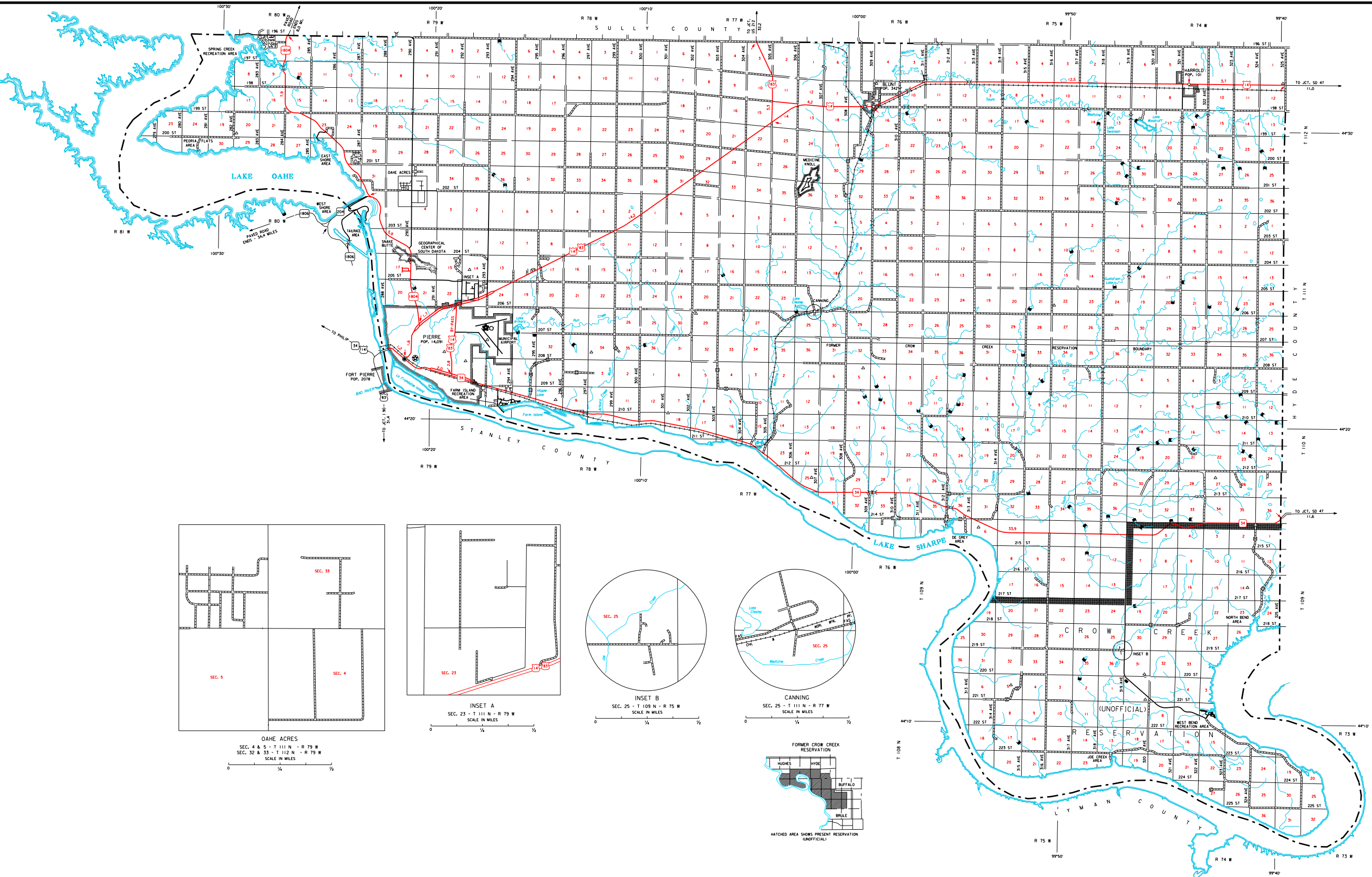
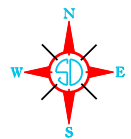


HUGHES COUNTY SOUTH DAKOTA



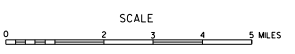
**LEGEND**

INTERSTATE HIGHWAY (FULL CONTROL OF ACCESS)	ROADWAY BRIDGE (OVER 20 FT. IN LENGTH)	NARROW STREAM
U.S. NUMBERED HIGHWAY	STEEL TRUSS BRIDGE (CLOSELY SPACED)	WIDE STREAM (INTERNATIONAL NAVIGATION)
STATE NUMBERED HIGHWAY	CONVEYER BRIDGE	DRAINAGE DITCH (MAIN)
FEDERAL AND SECONDARY HIGHWAY SYSTEM	FORD - ROAD ESTABLISHED	IRREGULAR DITCH
END OF FEDERAL AND DESIGNATED ROUTE	CONCRETE FORD	RESERVOIR, POND OR LAKE
	RAILROAD	RESERVOIR WITH DAM
	RAILROADS IN ADJUTATION	DAM
	RAILROAD CROSSINGS	WARD OF SWAMP LAND
	RAILROAD ABOVE	
	RAILROAD BELOW	
	RAILROAD WITH SURFACED RUNWAYS	
		ROCK, PIER, OR LANDING
		HIGHWAY BRIDGE OVER 20 FT. IN LENGTH
		STEEL TRUSS BRIDGE (CLOSELY SPACED)
		CONVEYER BRIDGE
		FORD - ROAD ESTABLISHED
		CONCRETE FORD
		RAILROAD
		RAILROADS IN ADJUTATION
		RAILROAD CROSSINGS
		RAILROAD ABOVE
		RAILROAD BELOW
		RAILROAD WITH SURFACED RUNWAYS
		MILITARY FIELD
		ARIELD, LIMITED FACILITIES
		LANDING AREA OR STRIP
		INCLUDING PRIVATE AIR FIELDS
		ARRAY LIGHT BEACON (GENERAL)
		STATE LINE
		COUNTY LINE
		CONGRESSIONAL TOWNSHIP LINE
		SECTION LINE
		FEDERAL AND STATE RESERVATION BOUNDARY LINE
		RESERVATION (SMALL)
		COUNTY SEAT
		OTHER CITIES AND VILLAGES
		UNINCORPORATED VILLAGE OR AREA OF CONGESTED CULTURE
		INCORPORATED CITY OR VILLAGE
		(FIGURES INDICATE 1990 POPULATION)



**GENERAL HIGHWAY MAP**  
**HUGHES COUNTY**  
**SOUTH DAKOTA**

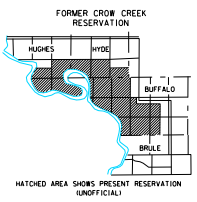
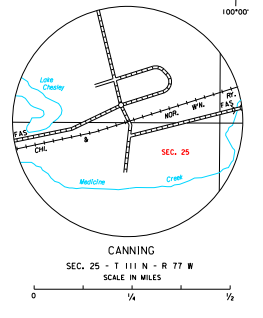
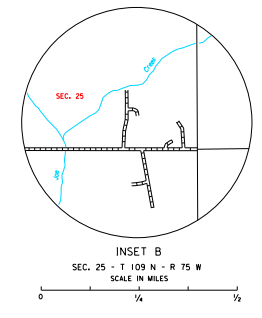
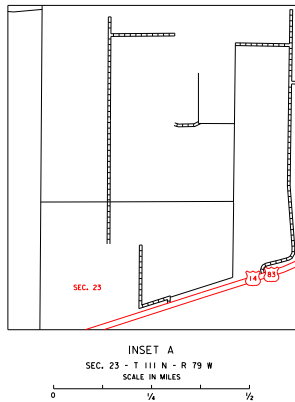
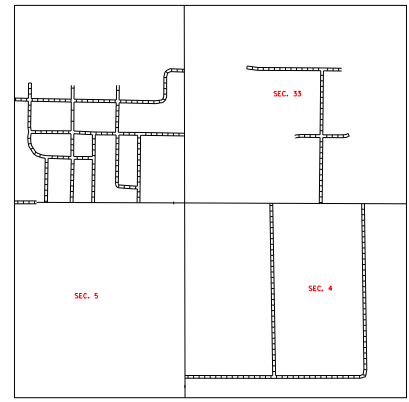
prepared by the  
 SOUTH DAKOTA DEPARTMENT OF TRANSPORTATION  
 in cooperation with the  
 U.S. DEPARTMENT OF TRANSPORTATION  
 FEDERAL HIGHWAY ADMINISTRATION



2021



UNIVERSAL TRANSVERSE MERCATOR PROJECTION



RESTRICTION OF LIABILITY: The South Dakota Department of Transportation, its employees, contractors, or subcontractors shall not be held liable for any errors or omissions in this map or for any damages, including consequential damages, arising from the use of this map. The Department of Transportation shall not be held liable for any damages, including consequential damages, arising from the use of this map. The Department of Transportation shall not be held liable for any damages, including consequential damages, arising from the use of this map.

COPIES OF THIS MAP ARE AVAILABLE FOR PUBLIC USE AT A NOMINAL COST  
 S.D. Department of Transportation  
 Map Sales - P.O. Box 673 509  
 Pierre, South Dakota 57501