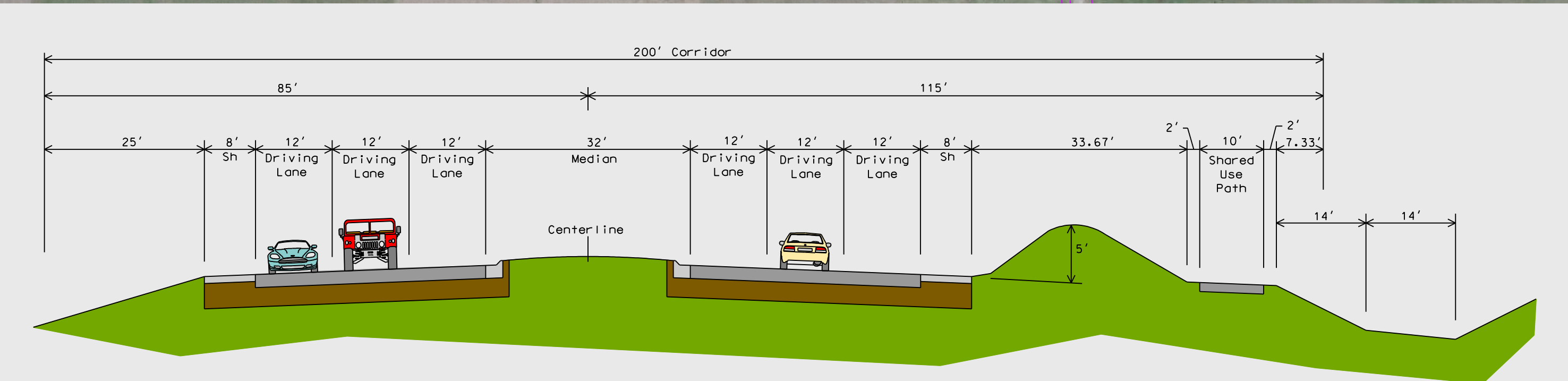
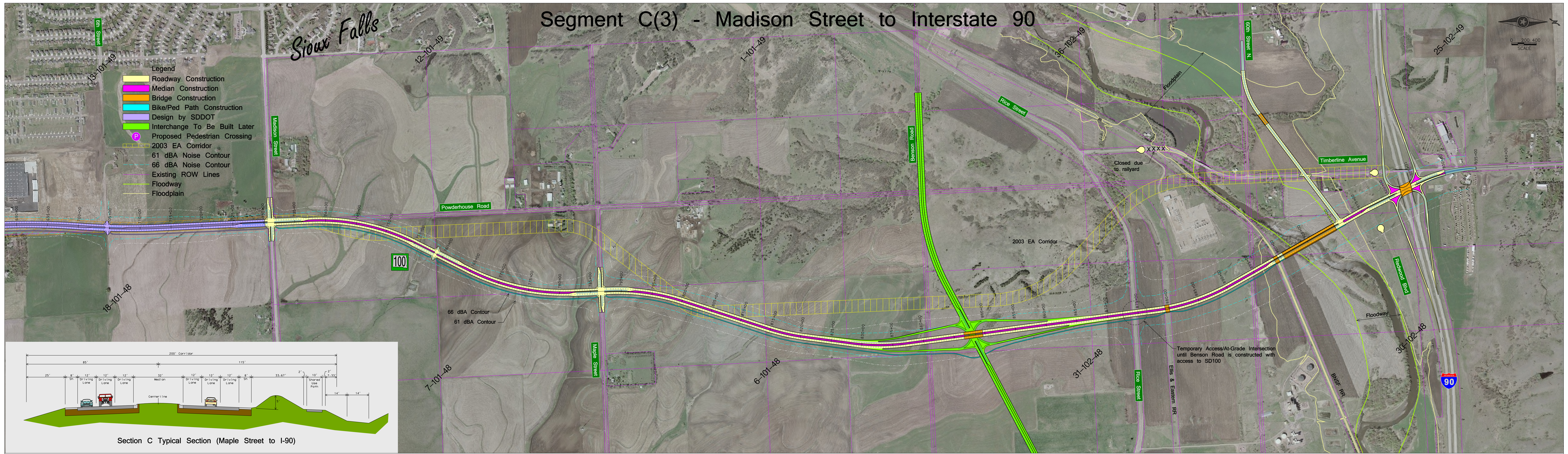


Segment C(3) - Madison Street to Interstate 90

Sioux Falls



- Legend**
- Roadway Construction
 - Median Construction
 - Bridge Construction
 - Bike/Ped Path Construction
 - Design by SDDOT
 - Interchange To Be Built Later
 - Proposed Pedestrian Crossing
 - 2003 EA Corridor
 - 61 dBA Noise Contour
 - 66 dBA Noise Contour
 - Existing ROW Lines
 - Floodway
 - Floodplain



Section C Typical Section (Maple Street to I-90)

