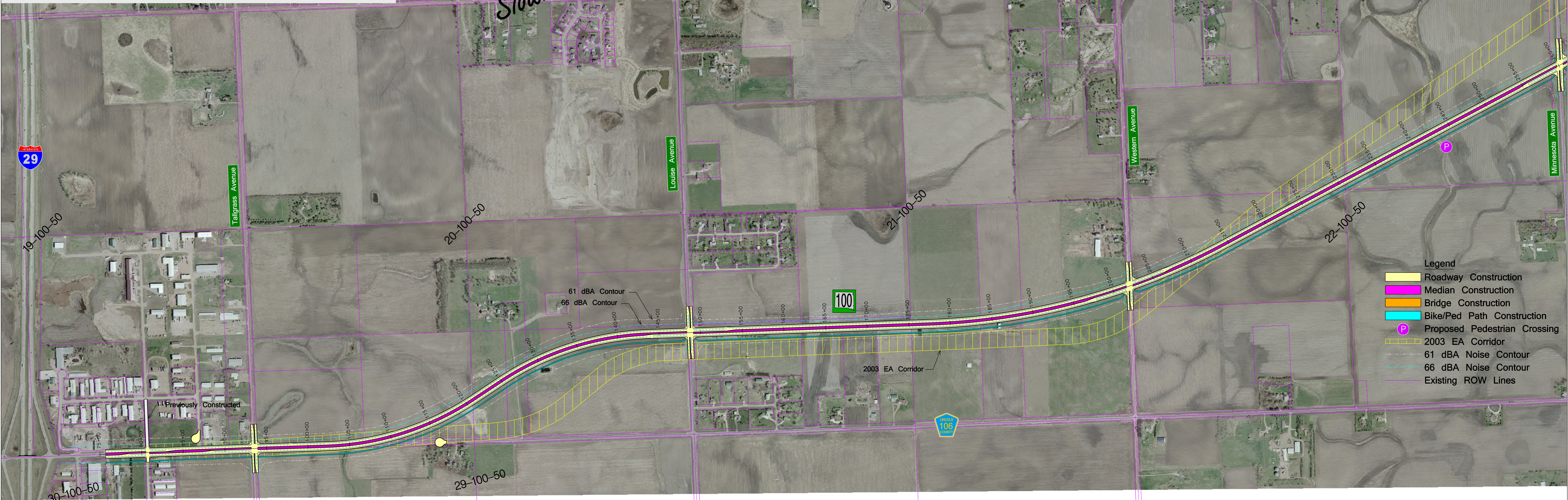
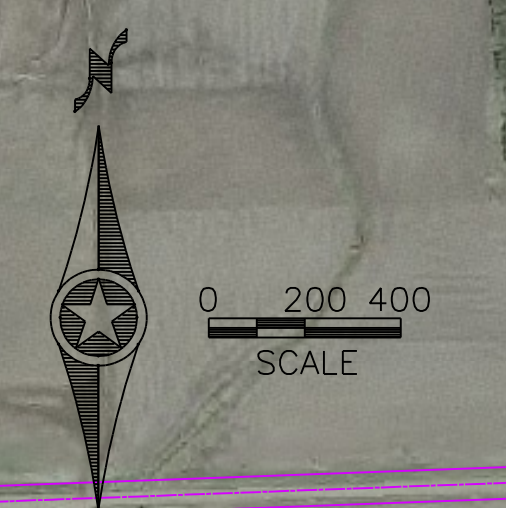


Segment A(0) - I-29 to SD115 (Minnesota Ave.)



- Legend**
- Roadway Construction
 - Median Construction
 - Bridge Construction
 - Bike/Ped Path Construction
 - P Proposed Pedestrian Crossing
 - 2003 EA Corridor
 - 61 dBA Noise Contour
 - 66 dBA Noise Contour
 - Existing ROW Lines

